

MYOB Greentree

Security Recommendations

October 2023



Contents

Introduction	1
User Accounts	2
Configure Account Settings	2
Monitor User Logins	4
Windows Accounts	5
Use a Service Account	5
Windows Apps	7
Block Fat Client Applications	7
Restrict Thin Client Applications	8
Encrypt Thin Client Communication	9
Use OAuth 2 for Exchange Web Services	11
Windows Servers	13
Configure Transport Layer Security (TLS)	13
Web Apps	14
Configure Browser IP Address Lockout	14
Configure eModules	16
Secure API	17
Web Server	18
Add Response Headers	19
Block Short Filename Disclosure	21
Configure Default Error Pages	22
Require HTTPS	25
Restrict Response Headers	26
Secure Cookies	29

Uninstall Microsoft SOAP	33
Database	34
Encrypt the Database	34
Configure Attachment Security	36

Introduction

MYOB takes security seriously. We want to provide MYOB Greentree Partners with the best advice for securing Greentree sites.

This document describes practices that will increase the security of Greentree systems and the data they hold. It identifies the intention of each practice, describes how it increases security, signals implications of adopting the practice and gives detailed instructions.

Although great care has been taken in the preparation of these recommendations, implementation, enforcement and verification remain the responsibility of Partners.

We expect to expand and to refine this material and to publish new versions from time to time.

Version	Summary	Publication Date
1	Initial release	July 2019
2	Added database encryption and application restrictions	January 2020
3	Added account settings, web server recommendations, attachment security and OAuth2	February 2021
4	Extended web server recommendations	November 2021
5	Extended OAuth2 recommendations for eDocs	December 2021
6	Extended OAuth2 recommendations for email sending	March 2022
7	Added Browser IP Address lockouts	May 2022
8	Added TLS configuration recommendations	October 2022
9	Extended web server recommendations	March 2023
10	Added SOAP removal recommendation	October 2023

In this version, a recommendation was added for removing the Microsoft SOAP Toolkit which is no longer required for sites at Greentree version 2023.3.

User Accounts

This section contains recommendations for managing user access to Greentree.

Configure Account Settings

Greentree allows site administrators to enforce strong password management rules on Greentree user accounts. This is highly configurable and easy to apply.

Recommendations

1. Force accounts to be locked out after successive attempts to sign in with an incorrect password.
2. Force sessions to be closed after being idle.
3. Turn on the Advanced Password Management feature and configure rules for password complexity, length, expiry, lockouts and re-use.
4. Configure maximum password attempts for eHR, eTimesheet and eService users.

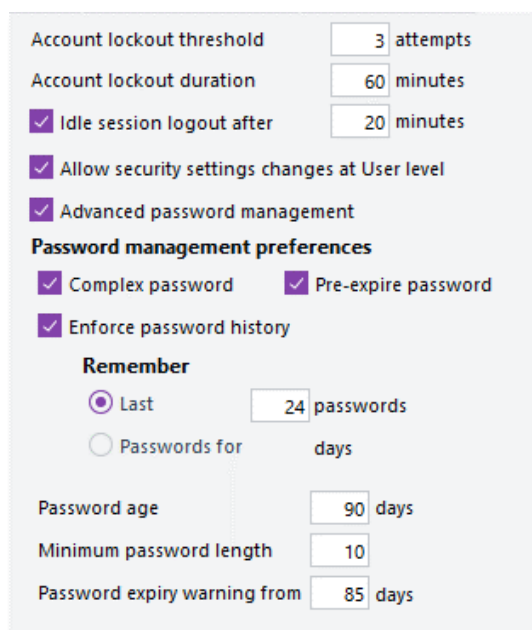
The Idle Session Logout feature applies to Windows client and Browser sessions, but not eModules. Account locking and Advanced Password Management applies to Windows client and Browser sessions. From Greentree release 2021.1 password complexity and history rules also apply to eModule users – contacts, organisations, JC employees and HR employees – provided Advanced Password Management is turned on.

Instructions

1. Sign in to Greentree as an administrator and locate the **Account settings** tab of the General System Preferences form.
2. Set the **Account lockout** threshold (between 2 and 9 attempts) and duration (up to 1 day).
3. Turn on **Idle session logout** and set the idle period.

User Accounts

4. Turn on **Advanced password management** and apply the recommended settings shown here:



The screenshot shows a settings window for user accounts. The settings are as follows:

Setting	Value
Account lockout threshold	3 attempts
Account lockout duration	60 minutes
Idle session logout after	20 minutes
Allow security settings changes at User level	<input checked="" type="checkbox"/>
Advanced password management	<input checked="" type="checkbox"/>
Password management preferences	
Complex password	<input checked="" type="checkbox"/>
Pre-expire password	<input checked="" type="checkbox"/>
Enforce password history	<input checked="" type="checkbox"/>
Remember	
Last	<input checked="" type="radio"/> 24 passwords
Passwords for	<input type="radio"/> days
Password age	90 days
Minimum password length	10
Password expiry warning from	85 days

The full detail of settings such as Complex Password is described in the [Greentree online help](#).

5. Locate the **eModule Control** form. Depending which modules are licensed and enabled, this can be found using these menu paths:
System > eTimeSheets > Setup
SCM > System > eRequisitions > Module Control
CRM > System > eService > Module Control
CRM > System > eCRM > Module Control.
6. Set Max Login Attempts to 3.
7. Turn off Allow auto emailing of forgotten passwords.
8. Locate the **eHR Module Control** form using this menu path:
HR > System > eHR > Setup > Module Control.
9. Set Max Login Attempts to 3.
10. Turn off Allow auto emailing of forgotten passwords.

Monitor User Logins

Site administrators can monitor user logins by:

- Inspecting and managing current Windows client sessions on the **Users Logged In** screen. This lets administrators monitor licence usage and terminate user sessions. To open this screen, go to the **Help** menu and choose **About**, then click **View Licence Usage**.
- Inspecting and reporting historical sessions from Windows and Browser clients by using Query Designer. This is useful for troubleshooting and auditing.
- Inspecting and reporting current and recent IP address lockouts can by using Query Designer. This can be useful for monitoring lockouts and tuning lockout settings.

Recommendations

Use Query Designer to set up a query and view for inspecting user login history.

User Query Designer to set up a view for inspecting IP address lockouts.

Instructions

1. Open Query Builder by going to **System > Utilities > Query Designer > Query Builder**.
2. Create and save a query using the class **UserLoginHistory**.
3. To see only recent entries, add a filter by property **loginTimeStamp**.
4. Open **View Builder**.
5. Create and save a view using the class **UserLoginHistory**.
6. From the **Data Elements** panel, add:
 - **userName**
 - **userOSName**
 - **loginTimeStamp**
 - **logoutTimeStamp**
 - **description**
 - **computerName**
 - **getAppName**.
7. Add properties introduced in Greentree version 2022.2:
 - **ipAddress**
 - **lockedAccount**
 - **lockedIPAddress**.
8. Run the query with the selected view.
9. Scan the results.

An entry where **lockedAccount** is true means a user failed a login attempt that locked their account. An entry where **lockedIPAddress** is true means a user failed a login attempt that triggered an IP address lockout.
10. Create a view on class **USIPAddressLoginFailureHistory** that shows properties **ipAddress** and **lockoutFinishTime**.

Windows Accounts

This section deals with the Windows accounts under which Greentree services run.

Use a Service Account

The principle of least privilege is that a program should have the minimum access to resources needed for its purpose. This should be applied to the Jade programs that are the basis for the Greentree system.

The standard production configuration for a Jade site is to run the Jade database server (*jadrap*) and application servers (*jadapp*) as Windows services. This allows the services to be started and shut down automatically.

By default, Windows services run under the default Local System account. This is a pre-defined account with extensive privileges. It is not recommended for use with Greentree services.

Recommendations

Use a service account created and configured specifically for Greentree services. The service account should be configured so that the password never expires. Once you have created the new service account, it will need full control of the Jade installation directory.

If your database server and application servers run on different machines, you'll need to create a service account on each machine and configure each account with permissions on its corresponding machine. The site's IT infrastructure may require the accounts to be whitelisted in firewall rules to allow communication.

If the site runs Microsoft's Active Directory service, you should consider creating a Managed Service Account. Supporting material can be found here

<https://blogs.technet.microsoft.com/askds/2009/09/10/managed-service-accounts-understanding-implementing-best-practices-and-troubleshooting/>.

Instructions

Locate *Local Users and Groups* on the Computer Management application.

Create the service account with a meaningful name such as *GreentreeServiceAcc*.

Turn on setting *Password never expires*.

Deny this user permissions to log on to Remote Desktop Session Host server.

On Dial-in, Network Access Permission, select *Deny access*.

Grant the account full control of the Jade installation directory e.g. C:\Greentree and all its subdirectories and files by:

- Opening Windows File Explorer.
- Locating the Jade installation directory.
- Choosing **Properties** from the pop-up menu.
- Clicking on the **Security** tab.

- Clicking on the **Edit** button.
- Adding the account and granting it **Full Control**.

Modify the Windows service to use the account by:

- Opening Windows services.
- Locating the service.
- Choosing **Properties**.
- Clicking the **Log On** tab.
- Choosing the **This Account** option.
- Clicking the Browse button,
- Searching for and selecting the account
- Entering the account's password and clicking **OK**.

Confirm that services start and stop correctly.

Windows Apps

This section deals with the security of data in transit for Greentree Windows applications.

Block Fat Client Applications

Jade provides two mechanisms for Windows client connections. A Jade **thin client** is a presentation client. It is a light-weight executable that runs on a user's Windows computer. It handles the graphical user interface and communicates with the remote Jade application server.

A Jade **fat client** is a Windows executable that manages a Jade database node. The node holds persistent and transient data at rest. This is necessary for some Greentree services that run on Windows servers; this can be the same machine where the primary database resides or another machine. System administrators can restrict access to these servers but cannot easily restrict access to Jade fat clients running in other locations. There should be no need for users to employ fat client access to a production Greentree site.

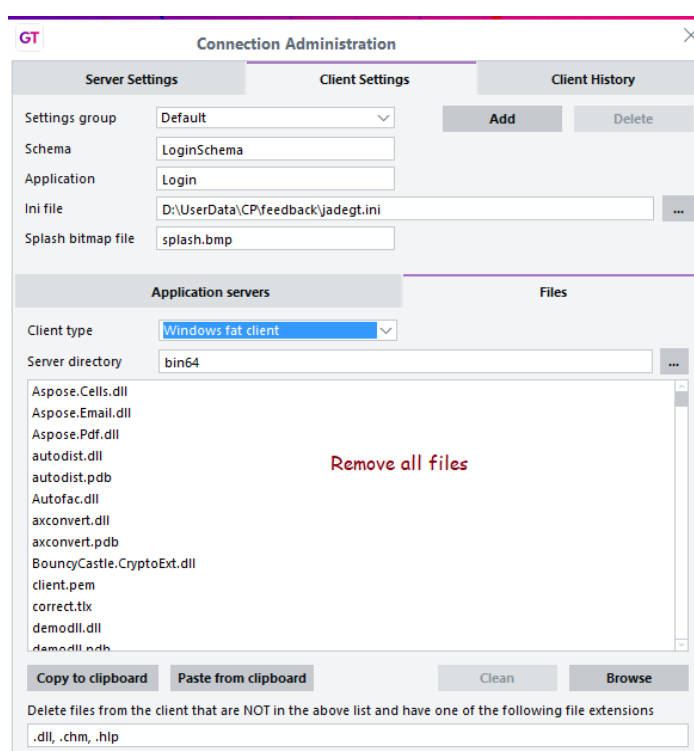
Recommendations

Do not configure fat client user access to Greentree.

Block existing fat client user access via Connection Manager.

Instructions

Run the Connection Admin application. Click the **Client Settings** tab, and the **Files** tab beneath it. For each Settings group, select the client type **Windows fat client**. Clear the list for this client type under all settings groups by selecting all (Ctrl+A) and using the Delete key.



Restrict Thin Client Applications

The normal access to the Greentree Windows client is initiated using Greentree's Connection Manager executable. This will launch only those applications configured using Connection Administration. However, users with knowledge of an application server's address and port number can attempt to start other applications using the Jade executable in a local directory. Fortunately, Jade provides a way of enforcing a white-list of allowed applications.

Recommendation

Configure the INI file used by application servers to restrict applications that can be launched by thin client applications.

Instructions

Turn on the EnableAppRestrictions setting in the [JadeAppServer] section of the application server's INI file, and specify a whitelist of applications using AllowSchemaAndApp{n} settings as illustrated below:

```
[JadeAppServer]
EnableAppRestrictions=true
AllowSchemaAndApp1=LoginSchema,Login
AllowSchemaAndApp2=LoginSchema,LoginWithTimeoutWarning
```

Encrypt Thin Client Communication

The recommended form of user access to the Greentree Windows application is via Jade **thin client**. This is a *presentation* client, a light-weight executable that runs on a user's Windows computer. It handles the local graphical user interface and communicates with the remote Jade application server via TCP/IP. This communication is vulnerable to attacks, but the risk can be mitigated using strong encryption.

Recommendation

In our recommended solution the client authenticates the application server, and communication is encrypted using SSL/TLS but the application server does not authenticate the presentation client. This requires each site obtaining, applying and updating an SSL certificate on the application server.

For more information and more advanced solutions see [Jade Smart Thin Client Security](#).

Instructions

Obtain a valid SSL certificate along with the private key. Store them in a secure folder on the server. For example, store certificate.pem and privatekey.pem in C:\GTCertificates. The certificates must be structurally correct and be signed by a valid Certificate Authority. Checks are not performed on the validity of the certificate date range nor that the connection is to whom the certificate says it should be. The certificate files must be in PEM-encoded format, and they cannot require passphrases.

Add the following to the JadeAppServer section of the application server's INI file. Set SSLSecurePort to the port of the app server.

```
[JadeAppServer]
RPCEncryptionEnabled=true
RPCEncryptionHookDLL=SSL_TLS
SSLPrivateKeyFile=C:\GTCertificates\privatekey.pem
SSLCertificateFile=C:\GTCertificates\certificate.pem
SSLSecurePort=50011
```

Add the following to the JadeThinClient section of the client INI file specified in Connection Manager:

```
[JadeThinClient]
RPCEncryptionEnabled=true
RPCEncryptionHookDLL=SSL_TLS
SSLSecurePort=50011
```

For internal testing, use OpenSSL to generate a self-signed certificate with the command below. Note that MYOB does not recommend using self-signed certificates on production systems.

```
openssl req -newkey rsa:2048 -new -nodes -x509 -days 365 -keyout
privatekey.pem -out certificate.pem
```

To confirm the application server has started correctly, check that it appears with details=SSL in the Jade Monitor:

User	Tran State	Application	App Type	Client IP Address	Thin Client	AppServer Port	
Current Database Role : Non SDS system							
Node - EC2AMAZ-BG8A5FB2 {pid=4604} < app server > <64-bit node> <IP=procX11FC> <Connection details=SSL,TcpIpv4,50011,0.0.0.0>							
Administrator_1280 {81}		Login/LoginSchema	GUI	127.0.0.1	Y	50011	
clientBackground {25}		RootSchemaApp/RootSchema	GUI	procX11FC			

When a thin client has connected to the app server, the lines like these should appear on the jommsg log:

```
2019/07/26 07:11:41.499 02708-4da0 JadApp: Client Tcp
address=11.11.11.11 port=53561, App Server Tcp address=22.22.22.22
port=50011, protocol=2
2019/07/26 07:11:41.612 02708-4da0 jomsec: Current cipher DHE-RSA-
AES256-GCM-SHA384, strength 256 bits.
```

Use OAuth 2 for Exchange Web Services

Three Greentree functions retrieve documents via email using Microsoft Exchange Web Services: CRM Email Filing, eDocs and eXchange EDI. In addition, Greentree can send mail using Exchange Web Services. To date, Exchange has supported two forms of authentication: basic authentication and OAuth 2, which is more secure.

With basic authentication, a Greentree user provides the username and password required to access an email account, and those credentials are stored in the database until needed by the email retrieval function.

With OAuth 2, Greentree directs the user to a Microsoft web page that captures the username and password for the email account. The Microsoft web page then passes a token back to Greentree, which is stored in the database.

In 2020, Microsoft announced that basic authentication would be phased out. The initial change only affected publicly accessible Exchange Servers, but privately managed servers could continue to use basic authentication.

Until version 2020.5, Greentree supported only basic authentication. From version 2021.1, Greentree also supports OAuth 2 for CRM Email Filing and eXchange EDI. From version 2021.4, Greentree also supports OAuth2 for eDocs. From version 2022.1, Greentree also supports OAuth2 for email sending. Both authentication methods store credentials in the database using reversible encryption, and decrypt them on the fly when connecting to mail servers. Greater security for data at rest can be achieved by [encrypting the database](#).

Recommendations

1. If the server providing Exchange Web Services has OAuth 2 enabled, change the credentials in your Greentree system to use OAuth 2 instead of basic authentication.
2. If the server does not have OAuth 2 enabled, make it so!
3. Use Greentree's **Token Management** function to ensure OAuth 2 credentials are kept usable.

Instructions

Locate basic credentials in the following places:

- For each company that uses CRM Email Filing, open the CRM Module Control form (CRM > System > Module Control), locate the Exchange Account settings on the Main tab.
- For each row of the table on the Main tab of the eDocs Module Control form (System > eDocs > Module Control) that has a type of email.
- For each EDI Profile that retrieves documents by email, on the Source by Email tab of the eXchange EDI Profiles form.
- For each EDI Email Import Task (System > eXchange EDI > Tools > Email Fetch Tasks).
- On the Emailing Preferences tab of the General System Preferences form (System > System Setup > General System Preferences).
- On the Company Maintenance form (System > System Setup > Company Maintenance), open the Emailing Preferences tab and step through each company; identify companies where the Use Company settings is turned on.

In each case, click the **Credentials** or **Change** button, change the **Authentication method** from “Basic” to “OAuth2”, save and click **Log in**. The user is redirected to a Microsoft sign-in page, where they can log in with their OAuth 2 details. Once the user is successfully authenticated, their OAuth login token is stored in the Greentree system. You can use the Token Management window (System > Utilities > Token Management) to check that users’ OAuth tokens are kept up to date, and set email reminders for when the tokens are due to expire.

Windows Servers

This section deals with the security of data in transit between client applications and the Windows server hosting the Greentree database or web server.

Configure Transport Layer Security (TLS)

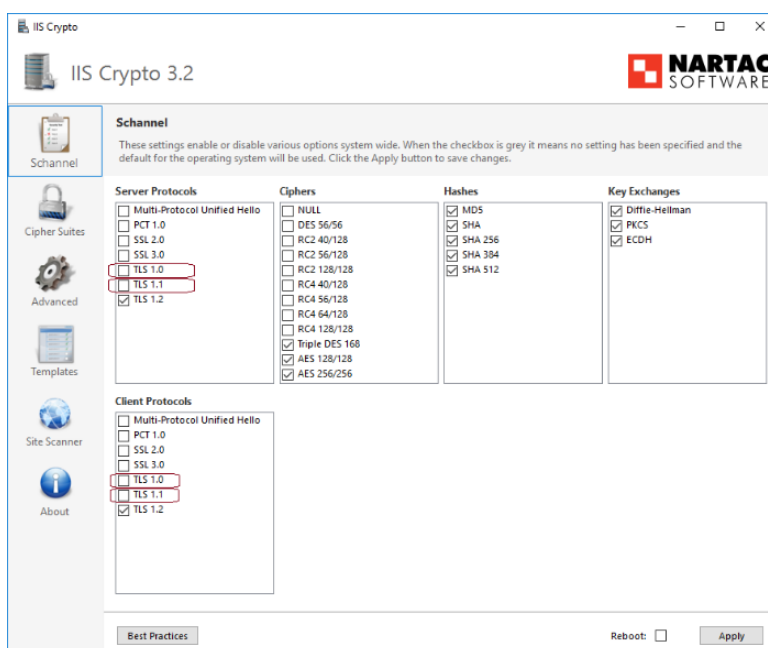
Transport Layer Security is the protocol that secures communications between client and server.

Recommendations

1. Use the third-party tool IIS Crypto to configure the server's Windows Registry for recommended server and client protocols, ciphers, hashes and key exchanges. At the time of writing, the latest release was version 3.2 from April 2020.
2. Disable TLS 1.0.
3. If your site runs IIS on a separate machine from the database server, repeat the instructions on both servers.

Instructions

1. Download the [IIS Crypto GUI tool](#) to your server.
2. Run the application
3. Click **Best Practices**.
4. In the **Server Protocols** section, deselect the **TLS 1.0** and **TLS 1.1** checkboxes.
5. In the **Client Protocols** section, deselect the **TLS 1.0** and **TLS 1.1** checkboxes.



6. Select the **Reboot** checkbox and click **Apply**, so the changes take effect.

Web Apps

This section deals with the security of data in transit for Greentree web applications. It contains recommendations that are specific to Greentree Browser, eModules and the Greentree API.

Configure Browser IP Address Lockout

Access to the Greentree Browser is protected by the same authentication mechanism and Advanced Password Management features used for the Greentree Windows client. See [Configure Account Settings](#) for details.

Greentree version 2022.2.0 added protection against a particular type of scripted attack on Browser clients. The system can now detect repeated failed login attempts from the same IP address and block further login attempts from the same address for a short period.

The triggering and lockout duration are configurable. The default settings suit sites where requests from clients have unique IP addresses. Adjustments may be required where requests from clients on different machines are routed by a proxy server that makes them appear to come from the same IP address. The settings are:

- **Threshold** – the number of consecutive failed login attempts from the same IP address, default 3
- **Failure period** – the period in which the failed login attempts occur, default 10 seconds
- **Lockout period** – the duration of the lockout, default 60 minutes.

When a failed login attempt triggers an IP address lockout, the corresponding **User Login History** entry is marked with the **lockedIPAddress** property as true. During the lockout period, attempts to log in from the IP address are not recorded in **User Login History**.

Recommendations

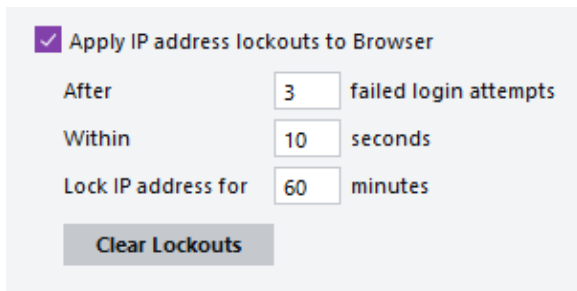
Set up a Query for inspecting user login history in your production system. See [Monitor User Logins](#) for details. In the long run, this will let you monitor unusual activity and to carry out troubleshooting. More immediately, it lets you see the pattern of IP addresses for Browser client logins.

If legitimate users are logging in to the Browser without trouble, no changes are required.

If a legitimate user is locked out, use the **Clear Lockouts** function. If this happens repeatedly, or if all Browser client logins appear to come from the same IP address, adjust the **Account Settings** to reduce lockouts.

Instructions

To view or maintain lockout settings, go to **System > System Settings > General System Preferences** and click the **Account Settings** tab.



☒ Apply IP address lockouts to Browser

After failed login attempts

Within seconds

Lock IP address for minutes

[Clear Lockouts](#)

- To reduce the number of lockouts, increase the threshold in the **After ... failed login attempts** field, and/or decrease the period in the **Within ... seconds** field.
- To reduce the duration of lockouts, decrease the lockout duration in the **Lock IP address for ... minutes** field.
- To disable the IP lockout facility, deselect the **Apply IP address lockouts** checkbox.

Note: Changes to these settings are effective immediately to *new* login attempts, but do not affect existing lockouts. To clear current lockouts, click the **Clear Lockouts** button.

Configure eModules

The eModule applications offer control over the facility where a user can request a password to be reset with a new password being sent by email. They also allow demonstration facilities based on credentials stored in INI files.

Recommendations

- Turn off the facility for resetting and emailing passwords in Greentree.
- Remove demonstration facility credentials from configuration files on the web server.

Instructions

To turn off the password reset facility:

1. Open the **eModule Control** form by selecting **CRM > System > eCRM > Module Control** or **CRM > System > eService > Module Control**.
2. On the **Main** tab, deselect the **Allow auto emailing of forgotten passwords** setting.



To remove the demonstration facility:

1. Locate the eGreentree.ini files in each of the eModules directories on the web server. For example,
C:\inetpub\wwwroot\Greentree\eApprovals\configuration\eGreentree.ini
2. In the **[Login]** section of the INI file, remove the lines that begin with:
 - DemoCompanyCode
 - DemoCustomerCode
 - DemoCustomerPassword
 - DemoEmployeeCode
 - DemoEmployeePassword
 - DemoExternalCode
 - DemoExternalPassword
 - DemoUserCode
 - DemoUserPassword
 - ShowDemoButton.

Secure API

The Greentree API can be secured by a technique called *reverse proxy*: communication between clients and the web server uses HTTPS and requires a certificate on the server, but communication between IIS and the API application running on the Jade database server uses TCP/IP.

Recommendation

Set up a reverse proxy using Microsoft IIS Manager. In preparation, devise a URL that is short and clear, like: `https://hostname/greentree/api/01/APIInvoice`. Your URL should include:

- A unique identifier for the system. This can be as simple as “greentree”.
- The word “api”, which distinguishes this from other applications on the same system.

Implement this by configuring a pattern on the inbound rule. For example, `greentree/api/*` as explained in the instructions.

Instructions

See the Greentree API documentation at:

<https://jubby.atlassian.net/wiki/spaces/GTAPI/pages/14352392/Achieving+an+SSL+connection+by+configuring+IIS+as+a+Reverse+Proxy>

Web Server

Greentree uses Microsoft's Internet Information Services (IIS) for its API, Browser, eModules, WebView and Webstore applications. This section contains some general recommendations for securing IIS.

The recommendations are current at the date of publication. They are not intended to be a definitive guide. Responsibility for securing web servers lies with sites, and the requirements change over time. Sites should set up and secure web servers following standard practice. Operating system and IIS security updates should be applied.

Recommendations for securing IIS are outlined on the [Microsoft](#) website and in the [IIS 8 Server Hardening Handbook](#).

This guide gives instructions for configuring IIS using the Internet Information Services Manager application. Experts can achieve the same results by editing XML configuration files, by running the AppCmd command line tool or by using WMI scripts.

Note: If URL Rewrite is not visible in IIS, download **URL Rewrite 2** from the Microsoft web site and install it.

Add Response Headers

Adding response headers helps protect users from malicious attacks like content sniffing, cross-site scripting (XSS) and framing.

Content sniffing

Content sniffing is the client-side activity of inspecting the content of data provided by a server to learn that data's format. This can be part of tricking a browser into executing a script that is disguised as another file type.

Adding the **X-Content-Type-Options** response header can help protect users from malicious content.

Cross-site scripting (XSS)

Cross-site scripting is the injection of client-side scripts into web pages. Reflected or non-persistent cross-site scripting involves scripts submitted by a client and reflected by a server.

Adding the **X-XSS-Protection** response header can reduce the risks. This header directs the behaviour of the browser when it detects content that could be used for reflected cross-site scripting attacks. With the *block* setting, a browser stops loading pages in this situation.

Framing

Framing is the hijacking of a web application so that it runs in an external site.

Adding the **X-Frame-Options** response header can prevent this. Since this header blocks browser pop-up windows, which are used extensively by eModules, it should not be added for sites running eModules.

Content Security Policy

A content security policy is used by the browser to enhance the security of a web page. It is primarily used to prevent cross site scripting, click jacking, and other code injection attacks resulting from malicious code. It contains details about the page and from where it is permitted to access data. For eModules the following header is recommended:

```
Content-Security-Policy: default-src 'none'; script-src 'self' 'unsafe-inline'; connect-src 'self'; img-src 'self'; style-src 'self' 'unsafe-inline'; frame-ancestors 'self'; form-action 'self';
```

This limits the browser to accessing only required content and accessing/posting that content from/to the IIS server serving the content. Note that these headers apply only to eModules websites, such as eCRM, eService, et al.

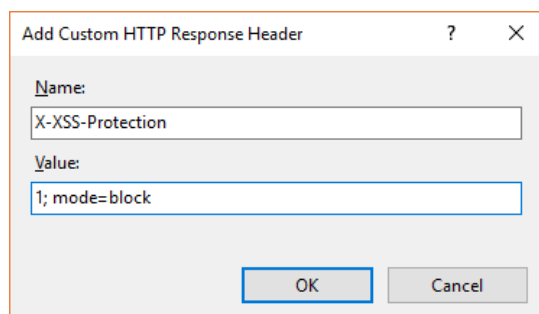
Recommendation

Configure HTTP headers that are added to the web server's responses for all web sites.

Instructions

1. Open IIS Manager.
2. In the **Connections** panel on the left, select the server.
3. In the **IIS** section, double-click **HTTP Response Headers**.

4. In the **Actions** panel on the right, click **Add...** to add headers.
5. To block content sniffing, add a response header with the name **X-Content-Type-Options** and the value **nosniff**.
6. To block cross-site scripting, add a response header with the name **X-XSS-Protection** and the value **1; mode=block**.



7. On sites that do not run eModules, to prevent framing, add a header with name **X-Frame-Options** and the value **Deny**.

After adding the headers, they're defined at the server level and inherited by all applications:



HTTP Response Headers

Use this feature to configure HTTP headers that are added to responses from the Web server.

Group by: No Grouping		
Name	Value	Entry Type
X-Content-Type-Options	nosniff	Local
X-Frame-Options	Deny	Local
X-XSS-Protection	1; mode=block	Local

8. On sites that run eModules, setting a local (for the eModule website only) content security policy header looks like this:

Group by: Entry Type		
Name	Value	Entry Type
Inherited		
X-Content-Type-Options	nosniff	Inherited
X-XSS-Protection	1; mode=block	Inherited
Local		
Content-Security-Policy	default-src 'none'; connect-src 'self'; img-src 'self'; s...	Local

9. Confirm this is effective by running an application, opening the browser's developer tools and inspecting the response headers:

```
x-content-type-options: nosniff
x-frame-options: Deny
x-xss-protection: 1; mode=block
```

Block Short Filename Disclosure

If short (8.3) file names are present or can be created, file names on the web server can be accidentally disclosed.

Recommendations

- Block the creation of short file names for new files. This does not remove short names for existing files.
- Configure IIS to block requests for URLs or query strings that containing tilde ~ characters.

Instructions

To disable creation of short file names:

1. On the web server, open a command window as an administrator.
2. Type this command: `fsutil behavior set disable8dot3 1`, then press **Enter**.

Note: To confirm the change, create a file with a long name, run `dir /x` and check that no short name is created.

To block requests containing tilde characters:

1. Open IIS Manager.
2. In the **Connections** panel on the left, select the server.
3. In the **IIS** section, double-click **Request Filtering**.
4. Click the **Rules** tab.
5. In the **Actions** panel on the right, click **Add Filtering Rule....**
6. Select the **Scan url** and **Scan query string** options.
7. In the **Deny Strings** section, enter a tilde (~).



Request Filtering

Use this feature to configure filtering rules.

<div> <div>File Name Extensions</div> <div>Rules</div> <div>Hidden Segments</div> <div>URL</div> <div>HTTP Verbs</div> <div>Headers</div> <div>Query Strings</div> </div>			
Name	Scan	Applies To	Deny Strings
Block url or query containing tilde	Query string, Url		~

Configure Default Error Pages

The default error pages that IIS shows can include details useful for hackers. You can reduce this risk by configuring custom error pages that disclose less information.

Resources for the Greentree browser include custom pages for common HTTP errors. You can also use these pages for other applications.

Recommendation

Configure IIS to use a single set of custom error pages for all Greentree web applications. If your IIS setup places all applications under a single web site, you can perform the setup for the web site and have the applications inherit the configuration.

Instructions

Note: If the **HTTP Errors** feature is not available in IIS Manager, turn it on in Server Manager, under **Web Server (IIS) > Web Server > Common HTTP Features**.

1. Open IIS Manager.
2. In the **Connections** panel on the left, locate your Greentree web applications. These might include the Greentree browser, six eModules (eApprovals, eCRM, eHR, eRequisitions, eService and eTimesheets) and WebView.
3. If the applications have a common parent node that has only Greentree applications beneath it, you can set up on that parent node. Otherwise, to avoid showing Greentree custom error pages for non-Greentree applications, you need to repeat the setup for each Greentree application.
4. Identify the node's physical directory.
5. Open the physical directory in file explorer.
6. Create a subdirectory named **custerr**.
7. In the **custerr** subdirectory, copy the six Greentree browser error pages from `browser\resources\custom_errors*.html`
8. Go back to IIS Manager.
9. Select the node in the left panel, locate the .NET Error Pages item in the middle panel and open it.
10. In the **Actions** panel on the right, click **Edit Feature Settings**.
11. In the **Edit Error Pages Settings** window, complete the following sections:
 - In the **Mode** section, select **Remote Only**.
 - In the **Redirect Mode** section, select **ResponseRedirect**.

- In the **Default Page** section, enter the URL `custerr/404.html`.

Edit Error Pages Settings

Mode

☐ On

☐ Off

☒ Remote Only

Redirect Mode

ResponseRedirect

Default Page

Absolute URL

custerr/404.html

Miscellaneous

☐ Allow Nested Errors

OK Cancel

12. Click **OK** to close the window.
13. In the left panel, reselect the node.
14. In the middle panel, open the **Error Pages** item.
15. In the **Actions** panel on the right, click **Edit Feature Settings**.
16. In the **Edit Error Pages Settings** section, complete the following sections:
 - In the **Error Responses** section, select **Detailed errors for local requests and custom error pages for remote requests** option.
 - From the **Path Type** dropdown, select **File**.

Edit Error Pages Settings

Error Responses

When the server encounters an error, return:

☐ Custom error pages

☐ Detailed errors

☒ Detailed errors for local requests and custom error pages for remote requests

Default Page

Path:

Path type:

File

OK Cancel

- Configure an entry for the six pages as illustrated below. If there is an *inherited* page for a matching status code, delete it and add a new one; this will show the entry type as *Local* on this display, and *Inherited* on the equivalent display for child nodes.



Error Pages

Use this feature to configure HTTP error responses. The error responses can be custom error pages, or detailed error messages that contain troubleshooting information.

Status Code	Path	Type	Entry Type
400	custerr\400.html	File	Local
401	custerr\401.html	File	Local
403	custerr\403.html	File	Local
404	custerr\404.html	File	Local
500			
503			

Group by: No Grouping

Edit Custom Error Page

Status code:

Example: 404 or 404.2

Response Action

☒ Insert content from static file into the error response

File path:

☐ Try to return the error file in the client language

- Remove any local overrides in child applications.
 - Go through each node beneath the node you have been configuring, open the **Error Pages** item and confirm that you see only inherited error pages, and that the **Feature Settings** show the inherited setting for **Error Responses (Detailed errors for local requests...)**.
- If you don't see the inherited error pages in child applications, you need to directly change the web.config file in the corresponding directory using a text editor.
 - Locate the XML element at configuration/system.webServer/httpError. If this contains a **<clear />** tag, remove it, save the file then reselect the node in IIS Manager. Check the inherited **Error Page** settings have restored.

To test your setup:

- Run a browser on a remote machine and enter an invalid URL e.g. `http://hostipaddress/greentree/greentree-desktop/doesnotexist`. This should display the Greentree 404.html page.
- Enter a URL for a virtual directory and confirm you get the Greentree 403.html page e.g. `http://hostipaddress/greentree`.

Hints:

- If you perform the checks using a browser on the server, you will get detailed ASP.NET and IIS error pages.
- IIS stores the configuration for each node in a web.config file in the corresponding physical directory. To restore an inherited **Error Page** item that you have deleted, edit this file.

Require HTTPS

When communicating with IIS, Greentree client applications use a protocol configured on IIS. With HTTPS, this communication is encrypted. It involves the use of secure sockets layer (SSL) and makes client applications certain of the server's identity.

Recommendations

- Obtain a certificate for each site.
 - For production environments, you should obtain certificates from official providers known as certificate authorities.
 - For test and development environments, you can use self-signed certificates.
- Enforce the use of HTTPS for these applications in IIS.
- Provide redirection of HTTP requests to HTTPS.

Instructions

Follow the instructions on the [Microsoft support site](#).

In summary, the steps are:

1. Obtain a certificate.
2. Install the certificate.
3. Configure the site's bindings for https and specify the certificate.
4. Turn on **Require SSL** in **SSL Settings** for the site, and confirm this is inherited by applications.
5. Test.

To configure redirection:

Note: If the **URL Rewrite** feature is not available in IIS Manager, turn it on in **Server Manager**, under **Web Server (IIS) / Web Server / Common HTTP Features**.

1. Open IIS Manager.
2. In the **Connections** panel on the left, select the server.
3. In the middle panel, open **URL Rewrite**.
4. Add a blank rule, set name "Redirect HTTP to HTTPS", requested URL option Matches the Pattern, using Regular Expressions, pattern (.*), action type Redirect, redirect URL https://{HTTP_HOST}/{R:1}, turn on Append query string, redirect type Permanent (301).
5. Add a condition that will prevent the rule being applied to HTTPS requests: condition input {HTTPS}, check Matches the Pattern, pattern ^OFF\$, turn on Ignore Case.

Test the redirection by entering a HTTP URL in a browser. Make sure that it redirects to the HTTPS equivalent.

Restrict Response Headers

By default, HTTP response headers reveal operating system, web server version numbers and settings that might help an attacker. Generally, it's easy to blocking or remove this sort of information:

Server: Microsoft-IIS/10.0

X-Powered-By: ASP.NET

Recommendation

Follow the instructions given below for:

- Removing the **X-Powered-By** header.
- Removing the IIS version information shown in the server header.

Instructions

To remove the X-Powered-By header:

1. Open IIS Manager.
2. In the **Connections** panel on the left, select the server.
3. In the middle panel, open **HTTP Response Headers**.
4. Select the **X-Powered-By** header, then click **Remove** in the **Actions** panel on the right.



HTTP Response Headers


Use this feature to configure HTTP headers that are added to responses from the Web server.

Group by: No Grouping		
Name	Value	Entry Type
X-Powered-By	ASP.NET	Local

To remove the value shown in the server header:

1. Open IIS Manager.
2. In the **Connections** panel on the left, select the server.
3. In the middle panel, open **URL Rewrite**.
4. In the **Actions** panel on the right, click **View Server Variables**.
5. Add the variable, **RESPONSE_SERVER**.
6. Create an **Outbound Rule** with the following settings:
 - In the **Name** field, enter "Remove IIS version information".
 - From the **Matching scope** dropdown, select **Server Variable**.
 - In the **Variable name** field, enter "RESPONSE_SERVER".
 - From the **Variable value** dropdown, select **Matches the Pattern**.
 - From the **Using** dropdown, select **Regular Expressions**.
 - In the **Pattern** field, enter **.+**.
 - In the **Action** section, from the **Action type** dropdown, select **Rewrite**.

- In the **Action** section, leave the **Value** field empty.

 **Edit Outbound Rule**

Name:
Remove IIS version information

Precondition:
<None> Edit...

Match

Matching scope:
Server Variable

Variable name:
RESPONSE_SERVER

Variable value:
Matches the Pattern

Using:
Regular Expressions

Pattern:
.+|

☒ Ignore case

Test pattern...

Conditions

Action

Action type:
Rewrite

Action Properties

Value:

☒ Replace existing server variable value

☐ Stop processing of subsequent rules

Note: This configuration is held in the applicationHost.config file typically in C:\Windows\System32\inetsrv\config.

To confirm the changes:

1. Open a browser's development tools and view **Headers**.
2. Go to a web page.
3. Check that the **X-Powered-By** header is not present and that no value is shown for the server header.

Secure Cookies

Cookies are vital to web applications and require protection.

- A web site that supports only HTTPS (see topic **Require HTTPS**) can block unprotected transmission by setting a cookie's Secure flag.
- Access to a cookie from client-side scripts can be blocked by setting a flag that has the misleading name of "HttpOnly".
- Access to a cookie can be restricted to the application that created it by configuring its Path attribute.

The Greentree Browser's session cookie is created with the default path and without the Secure flag. From version 2022.4 it sets the HttpOnly flag.

Greentree's eModule applications are built on the Classic ASP framework. This creates an identifier for each user session and stores it as a cookie. By default, the cookie has unrestricted scope, so is sent to all the user's applications on the site. By default the cookie does not have the HttpOnly flag set, so it can be accessed by client-side scripts.

Changes to the settings of server-created cookies can be made through configuration in IIS.

Recommendation

Follow the instructions given below for:

- Adding the HttpOnly flag to cookies
- Adding the Secure flag to cookies on sites that require HTTPS
- Setting the Path on cookies for each eModule application that is installed (eApprovals, eCRM, eHR, eRequisitions, eService and eTimesheets).

Since browsers treat the Path setting with case-sensitivity, ensure that users sign in to eModules with URLs matching the paths you configure in IIS.

Instructions

These instructions describe how to make changes in IIS Manager.

NOTE: Alternative instructions, for directly modifying the same settings in the XML configuration files, are given at the end.

The setup depends on the IIS concept of *inheritance*. In IIS, sites or applications are defined in a tree structure. By default, settings defined for one site are inherited by sites beneath it. This allows common setup such as the rewrite rules used for the Secure and HttpOnly flags on cookies to be done once rather than repeated for each site. By contrast, the Path settings differ, so need to be set for each application.

Caution: The tree structure of sites in IIS does not have to match the structure of Windows folders as shown in File Explorer or the Content View within IIS. Inheritance is based on IIS sites, not folders. These instructions refer to IIS sites and so you will need to be familiar with how your sites/folders have been set up in IIS, so that you know where to make your changes.

To set the Secure flag

This is achieved for all applications by adding a single pre-condition and rule at the site's top level.

Warning: this will break all applications unless a certificate is configured and HTTPS is used.

1. Open IIS Manager.
2. In the **Connections** panel on the left, select the site e.g. Greentree
3. In the middle panel, open **URL Rewrite**.
4. In the **Actions** panel on the right, click **View Server Variables**.
5. Add the variable **RESPONSE_Set_Cookie** if it is not already present, and return to rules.
6. In the **Actions** panel on the right, click **Add Rules**.
7. In the middle panel, under Outbound rules, select **Blank rule**
8. Name the rule **Set Secure flag on cookies**
9. Click on **Preconditions** and **Create New Precondition** with these settings:
 - In the **Name** field, enter **No Secure flag**
 - From the **Using** dropdown, select Regular Expressions.
 - In the **Logical grouping** dropdown, select Match All.
 - **Add** a condition with **Condition input** {RESPONSE_Set_Cookie}, choose **Does Not Match the Pattern** and paste the following string into the **Pattern** field:
; Secure
 - Add a second condition with **Condition input** {RESPONSE_Set_Cookie}, choose **Matches the Pattern** and enter just a full stop:

Name:
No Secure flag

Using:
Regular Expressions

Logical grouping:
Match All

Input	Type	Pattern
{RESPONSE_Set_Cookie}	Matches the Pattern	.
{RESPONSE_Set_Cookie}	Does Not Match the Pattern	; Secure

- Save the precondition
10. Select **Server Variable** in the **Matching Scope** combo.
 11. In the **Variable name** field, enter **RESPONSE_Set_Cookie**
 12. From the **Variable value** dropdown, select **Matches the Pattern**.
 13. From the **Using** dropdown, select **Regular Expressions**.
 14. In the **Pattern** field, enter
.*
 15. In the **Action** section, from the **Action type** dropdown, select **Rewrite**,
enter value
{R:0}; Secure
 16. In the Action panel at the right, click Apply.

To add the HttpOnly flag

This is achieved for all applications by adding a single pre-condition and rule at the site's top level.

1. Open IIS Manager.

2. In the **Connections** panel on the left, expand the tree and select the site e.g. Greentree
3. In the middle panel, open **URL Rewrite**.
4. In the **Actions** panel on the right, click **View Server Variables**.
5. Add the variable **RESPONSE_Set_Cookie** if it is not already present, and return to rules.
6. In the **Actions** panel on the right, click **Add Rules**.
7. In the middle panel, under Outbound rules, select **Blank rule**
8. Name the rule **Set HTTPOnly flag on cookies**
9. Click on **Preconditions** and **Create New Precondition** with these settings:
 - In the **Name** field, enter **No HttpOnly flag**.
 - From the **Using** dropdown, select **Regular Expressions**.
 - In the **Logical grouping** dropdown, select **Match All**.
 - **Add** a condition with **Condition input** {RESPONSE_Set_Cookie}, choose **Does Not Match the Pattern** and paste the following string into the **Pattern** field:
; HttpOnly
 - Add a second condition with **Condition input** {RESPONSE_Set_Cookie}, choose **Matches the Pattern** and enter just a full stop
.

Name:
No HttpOnly flag

Using:
Regular Expressions

Logical grouping:
Match All

Input	Type	Pattern
{RESPONSE_Set_Cookie}	Matches the Pattern	.
{RESPONSE_Set_Cookie}	Does Not Match the Pattern	; HttpOnly

- Save the precondition
17. Select 'Server Variable' in the **Matching Scope** combo.
 18. In the **Variable name** field, enter **RESPONSE_Set_Cookie**
 19. From the **Variable value** dropdown, select **Matches the Pattern**.
 20. From the **Using** dropdown, select **Regular Expressions**.
 21. In the **Pattern** field, enter
.*
 22. In the **Action** section, from the **Action type** dropdown, select **Rewrite**,
enter value
{R:0}; HttpOnly
 23. In the **Action** panel on the right, click **Apply**.

To set the Path on eModule cookies

These instructions use as an example the eCRM application, but can be repeated for each eModule application.

1. Select the application (e.g. eCRM) in IIS Manager.
2. Open **URL Rewrite**
3. Create an **Outbound Rule** with the following settings:

- In the **Name** field, enter **Set cookie path for ..** {eCRM or similar}.
- From the **Matching scope** dropdown, select **Server Variable**.
- In the **Variable name** field, enter **RESPONSE_Set_Cookie**
- From the **Variable value** dropdown, select **Matches the Pattern**.
- From the **Using** dropdown, select **Regular Expressions**.
- In the **Pattern** field, paste
(.*) Path=(/ (;\s*.*) | /\s*\$)
- Turn off the **Ignore case** check box.
- In the **Conditions** section add input {URL}, check **Matches the Pattern**, and **pattern**
(.*)
- In the **Action** section, from the **Action type** dropdown, select **Rewrite**, enter the value
{R:1}Path=/Greentree/eCRM{R:3}
(Modifying the path to match the location of this application)

4. Apply changes.

To make changes directly to configuration files

With care you can make equivalent changes to configuration files. Put aside a copy of each file before you modify it so you can revert to the original setup if needed.

1. Add the pre-conditions “No HttpOnly flag” and “No Secure flag” and rules to set the HttpOnly and Secure flags (if required) to the config file for the site’s top level e.g. C:\inetpub\wwwroot\Greentree\web.config.

```
<configuration>
  <system.webServer>
    ...
    <rewrite>
      <outboundRules>
        <rule name="Set HttpOnly flag on cookies" preCondition="No HttpOnly flag">
          <match serverVariable="RESPONSE_Set_Cookie" pattern=".*" />
          <action type="Rewrite" value="{R:0}; HttpOnly" />
        </rule>
        <rule name="Set Secure flag on cookies" preCondition="No Secure flag">
          <match serverVariable="RESPONSE_Set_Cookie" pattern=".*" />
          <action type="Rewrite" value="{R:0}; Secure" />
        </rule>
      <preConditions>
        <precondition name="No HttpOnly flag">
          <add input="{RESPONSE_Set_Cookie}" pattern="." />
          <add input="{RESPONSE_Set_Cookie}" pattern=""; HttpOnly" negate="true" />
        </precondition>
        <precondition name="No Secure flag">
          <add input="{RESPONSE_Set_Cookie}" pattern="." />
          <add input="{RESPONSE_Set_Cookie}" pattern=""; Secure" negate="true" />
        </precondition>
      </preConditions>
    </outboundRules>
  </rewrite>
```

2. Add rules to set the Path flag for each eModule application e.g. C:\inetpub\wwwroot\Greentree\eCRM\web.config. You’ll need to craft the Path in the rule to match the application and your site setup.

```
<configuration>
  <system.webServer>
    ...
    <rewrite>
      <outboundRules>
        <rule name="Set cookie path for eCRM">
          <match serverVariable="RESPONSE_Set_Cookie"
pattern="(.* )Path=(/ (;\s*.*) | /\s*$)" ignoreCase="false" />
```

```
<conditions>
  <add input="{URL}" pattern="(.*)" />
</conditions>
<action type="Rewrite" value="{R:1}Path=/Greentree/eCRM{R:3}" />
</rule>
</outboundRules>
</rewrite>
```

To verify the changes for each of the applications

1. Open a browser and navigate to the login page.
2. Open the browser's Developer Tools.
3. Log in.
4. In the tools select a file in the Network tab and inspect its cookies. Locate the cookie of interest e.g. one that begins ASPSESSIONID... and check its Path, HTTPOnly and Secure settings:

Name	×	Headers	Preview	Response	Initiator	Timing	Cookies
<ul style="list-style-type: none"> Login.asp Home.asp eGreentree.css ClientScripts.js 							Request Cookies <input type="checkbox"/> show filtered out request cookies
Name	Value	Domain	Path	Expires / Max-Age	Size	HttpOnly	Secure
ASPSESSIONID5GBBADBT	BKAJCDABFOCDHEBNPNKINGON	localhost	/GT4ID/eCRM/	Session	44	✓	✓

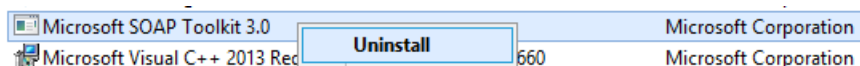
Uninstall Microsoft SOAP

Greentree's eModule applications were built using the Microsoft SOAP Toolkit as a mechanism for passing web requests and responses between ASP pages and the Jade database. In Greentree release 2023.3 this dependency was removed, which allowed it to be removed.

Do not remove Greentree library gtSoapHlp.dll. This secures user names and passwords and has no dependency on the Microsoft SOAP component.

Instructions

1. Confirm that the web server is not supporting any Greentree systems prior to release 2023.3.
2. Confirm that the eModule web resources were correctly updated with Greentree release 2023.3.
3. Open Programs and Feature in Control Panel.
4. Locate Microsoft SOAP Toolkit 3.0, right-click and choose Uninstall.



Database

This section deals with the security of data at rest. It covers the database, database nodes, backups and the security of attachments.

Encrypt the Database

A Greentree system may hold a large amount of personally identifiable information and commercially sensitive data. Some security can be gained through process improvements such as reviewing user accounts. Some can be gained through configuration within Greentree such as applying Advanced Password Management. Some improvements can be gained only through highly technical means such as *whole database encryption*.

Jade's database encryption uses operating system facilities to secure database files. Windows holds keys tied to the Windows account under which the database services run. Data is encrypted when stored by Jade's Object Manager (jom) and decrypted when retrieved. Individual Greentree applications are unaffected and have no visibility of this process.

The default encryption algorithm is Advanced Encryption Standard (AES) with a 256-bit key. This is provided by the Microsoft software stack (module CNG) and meets the requirements of United States Federal Information Processing Standards (FIPS) 140-2 level 2 certification. ([Jade Help](#))

The recommended use of this encryption with Greentree is:

- Encrypt the whole database rather than individual database (map) files.
- Apply the [Default Security](#) access check option.

The implications of using this form of protection include:

- **Secure handling of keys and passphrases is critical.**
"If you lose the exported master key or its export file passphrase, you cannot move the database to another machine or restore the contents of the keystore if it is lost or corrupted. In this case, you will be unable to access or decrypt the contents of the database." ([Jade Help](#))
- There may be minor performance degradation.
Our testing has not yet identified the extent or characteristics of this.
- Backups are encrypted.

There are restrictions on encrypting Jade databases that may be significant for VADs:

- The system cannot use a Relational Population Service working set.
(This does not apply to standard Greentree, which uses *full* RPS.)
- Jade applications cannot use single-file instances of the Jade class JadeBytes.
(The standard Greentree product does not do this.)
- Classes cannot be configured to use Jade's auto-partition facility.
(A change in release 2019.4 ensures Greentree's compliance with this.)

There are technical and management pre-requisites:

- Sites must use Microsoft's Active Directory service. ([Jade Help](#))

Recommendations

Review the costs and benefits of whole database encryption with each site's stakeholders.

Plan, agree and document your policies and procedures for secure handling of keys and passphrases.

Test the setup using a copy of a production database. Apply these configuration settings:

- Encrypt the whole database rather than individual database (map) files.
- Apply the [Default Security](#) access check option.

Be sure to test manual start-up and shut-down, automatic server restart, backup, and recovery from backup.

Warning

Secure handling of keys and passphrases is critical. If you lose them and have encrypted the database using default security, you will be able to use the system on the same server, but you will not be able to run it on another server, and you will not be able to decrypt the database. MYOB and JADE cannot retrieve lost keys or decrypt databases.

Instructions

Follow these Jade instructions:

- Set up server and client nodes to run under Active Directory accounts
- [Set the Service Principal Name](#) for the database server in the client INI file
- [Encrypting a Database](#)
- [Decrypting a Database](#)

Configure Attachment Security

Greentree has a common facility for attaching files to objects in the database. Files can be uploaded using the Windows client, Browser client and via other interfaces. The system itself also creates attachments. Users with suitable permissions can download these attachments and open them on their workstations. There's a risk that these attachments may contain malware which can be activated when users download and open the files.

Greentree can be configured to store attachments *internally* i.e. within the database or *externally* i.e. in a chosen directory on the server. Sites can ensure the safety of attachments by having Greentree store attachments externally, and by configuring regular virus scans of files in the attachments directory.

Recommendations

Configure in Greentree the list of restricted file name extension to suit your site.

Set up Greentree to store attachments externally, in a directory on the server. Configure the directory without execute permission and specify it as an additional directory to be included in backups. In addition, configure anti-virus software to scan files on the directory.

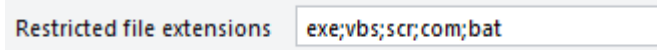
Instructions

The settings for attachments are system-wide but can be viewed and set in any of these places:

- CRM > System > Module Control, Main
- CRM > System > System Options, Email/Attachments
- HR > System > System Options, Email/Attachments
- Workflow > System > Module Control, Other.

To view or change blocked extensions:

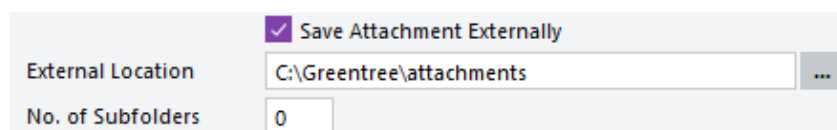
1. Locate the text box for **Restricted file extensions**
2. Add further extensions to the list, separated by semi-colons.
3. Remove extensions if you want to allow some usually restricted file types.



Restricted file extensions

To change from storing attachments internally to storing externally:

1. Locate the check box **Save Attachments Externally** and turn it on.
2. Set the **External Location** to the server directory for attachments.
3. Confirm that you would like to copy all existing attachments to the new location.



☒ Save Attachment Externally

External Location ...

No. of Subfolders

To set permissions on the attachments directory:

1. Locate the directory in File Explorer.

2. Right-click for Properties and go to the Security tab.
3. Disallow “Read & execute” permission for all users. If necessary, turn off inherited permissions for this directory.
4. Ensure the service account used for Greentree has read and write access.
5. Apply that change to subdirectories.