

# MYOB Exo Business

## Release Notes

2018.1

**myob**

# Contents

Introduction	1
What's New in this Release? .....	1
Installation	2
Pre-Install Requirements .....	2
Other Requirements.....	2
Installing MYOB Exo Business .....	2
Post-Installation .....	3
Logging in to Exo Business.....	3
New Features	4
Interface Updates .....	4
Custom Button Captions.....	4
Tax Return Key Point Selection .....	4
Update to Bank Feed Transactions .....	5
Unallocated Credits in the Creditors Payment Processor .....	5
Grid Column Extra Fields on Subscriptions.....	6
Support Scroll Wheel on Report Widgets .....	6
Updates to the About Window .....	7
New TPAR Field.....	7
Performance Improvements.....	8
Report Updates.....	8

Resolved Issues	9
Exo Business Core.....	9
Exo Business Config.....	10
Exo Job Costing.....	10
Exo Fixed Assets.....	10
Clarity Reports.....	11
Known Issues	12
Appendix 1: Profile Settings	14

# Introduction

## What's New in this Release?

The 2018.1 release is essentially a service pack release that allows us to deliver a number of partner-prioritised enhancements across the Exo Business system that improve the usability and performance of the system. These include interface updates that make the system easier to use, updates to various Clarity reports and fixes to issues identified in previous releases.

The purpose of this document is to provide essential information on the installation and use of this release:

- The **Installation** section provides an overview of the installation process, including pre-installation requirements and post installation steps.
- The **New Features** section describes all new features introduced in this release.
- The **Resolved Issues** section describes all issues that have been addressed by this release.
- The **Known Issues** section details any issues in this release that have been identified as requiring attention.
- The **New Profile Settings** appendix at the end of this document summarises all changes to Exo Business profile settings included in this release.

# Installation

## Pre-Install Requirements

Minimum system requirements for PCs running MYOB Exo Business components are detailed below. Full details of requirements and supported operating systems for MYOB Exo Business are available on the [Minimum System Requirements page on the Exo Business Education Centre](#).

The performance of the Exo Business system is not assured if these requirements are not met. Similarly, performance cannot be assured if the Exo Business system is installed on a server that is already under load from other processes, or a RDBMS that is not suitable for the organization's volume of data.

### Other Requirements

Certain features of MYOB Exo Business require one or more of the following:

- Internet access
- Microsoft Internet Explorer 7.0 or later
- Adobe® Acrobat Reader 7.0 or later

Microsoft Office connection requires Microsoft Word/Excel 2010 to 2016.

Contact synchronisation requires Microsoft Outlook 2010 to 2016.

MYOB Exo Business 2018.1 requires **ExonetLib.dll** version 2017.2.0 or later. Version 2017.2.0 is included with this release.

When installing manually on 64-bit operating systems, the file **RwEasyMAPI64.exe** must be copied from the **Supporting Files\RapWare** folder of the Exo Business DVD to the install directory. Register this file by running the following from a command prompt:

```
RwEasyMAPI64.exe /regserver
```

## Installing MYOB Exo Business

Information on installing and upgrading MYOB Exo Business is available on the MYOB Exo Business Education Centre—see the following pages:

- [Installing Exo Business](#)
- [Installing Exo Business Services](#)

## Post-Installation

Once MYOB Exo Business software is installed, it must be configured for use. Optionally, data can be migrated into the Exo Business system from another MYOB product. The configuration and migration processes are detailed in the *MYOB Exo Business Implementation Guide*.

### Logging in to Exo Business

New MYOB Exo Business databases are installed with one or more default user accounts. When logging in to Exo Business for the first time, you must supply the following login details.

For a new blank database (EXO\_LIVE):

- Default admin user = ExoAdmin
- Default admin password = ExoAdmin

For the demonstration database (EXO\_DEMO):

- Default admin user = ExoAdmin
- Default admin password = ExoAdmin
- Default demo user = demo
- Default demo password = DEMO

**Note:** Passwords are case-sensitive.

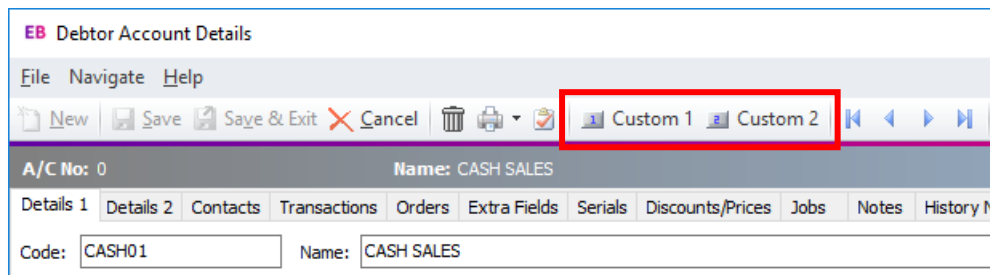
# New Features

## Interface Updates

This release includes updates to the Exo Business user interface to make information more accessible and make the system easier to use.

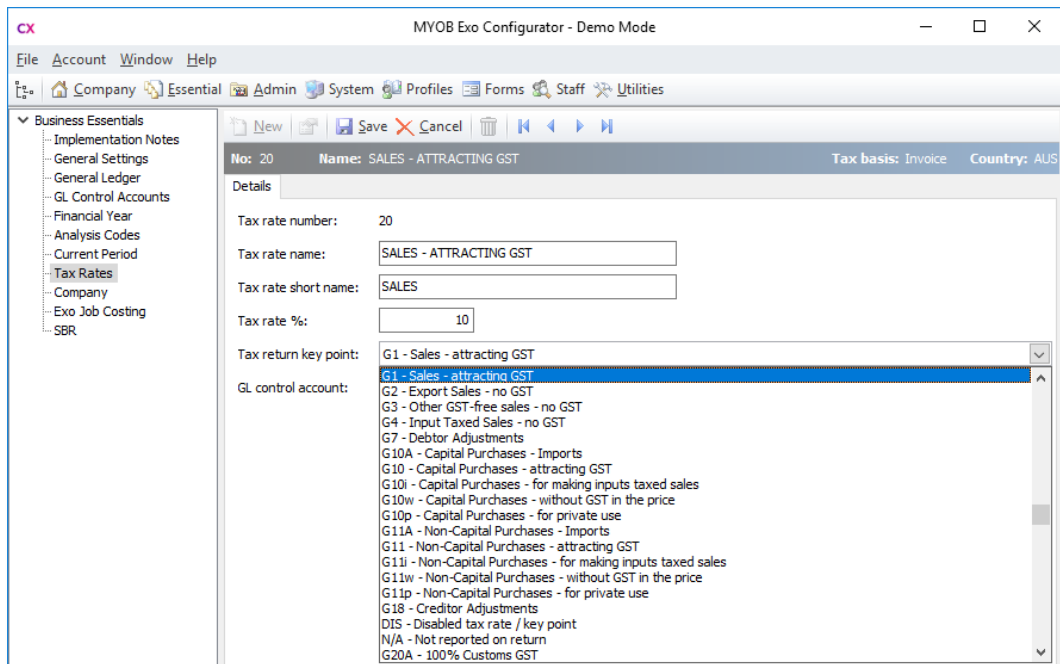
### Custom Button Captions

The captions for custom buttons now appear next to the buttons, where previously they only appeared when the mouse hovered over each button:



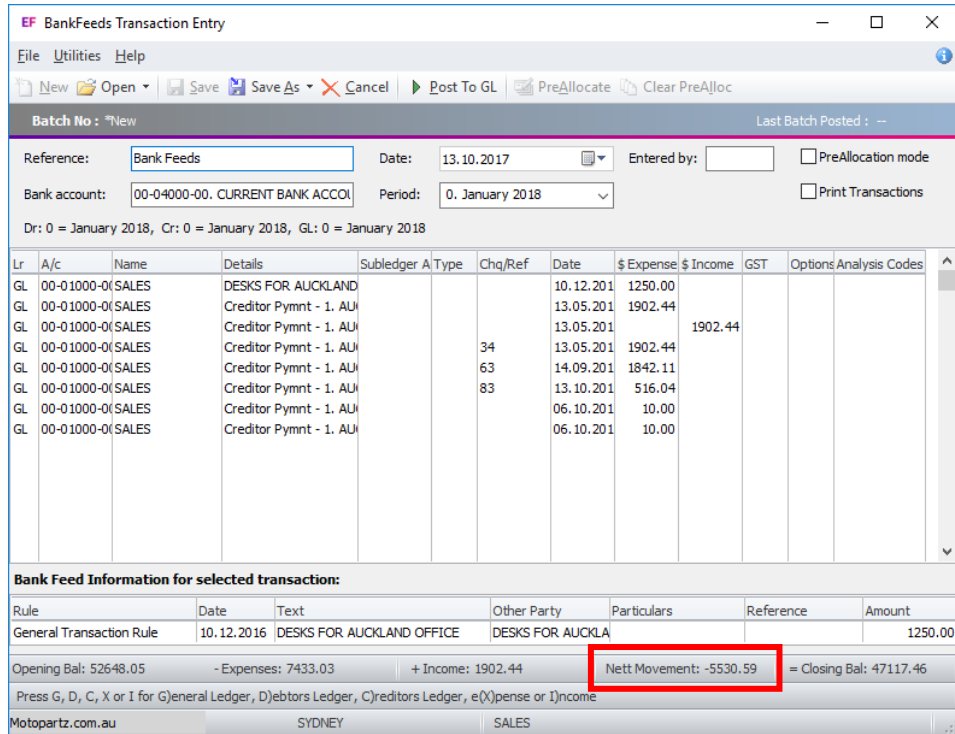
### Tax Return Key Point Selection

The **Tax return key point** dropdown on the Tax Rates section of Exo Business Config has been enlarged to show more key points without scrolling:



## Update to Bank Feed Transactions

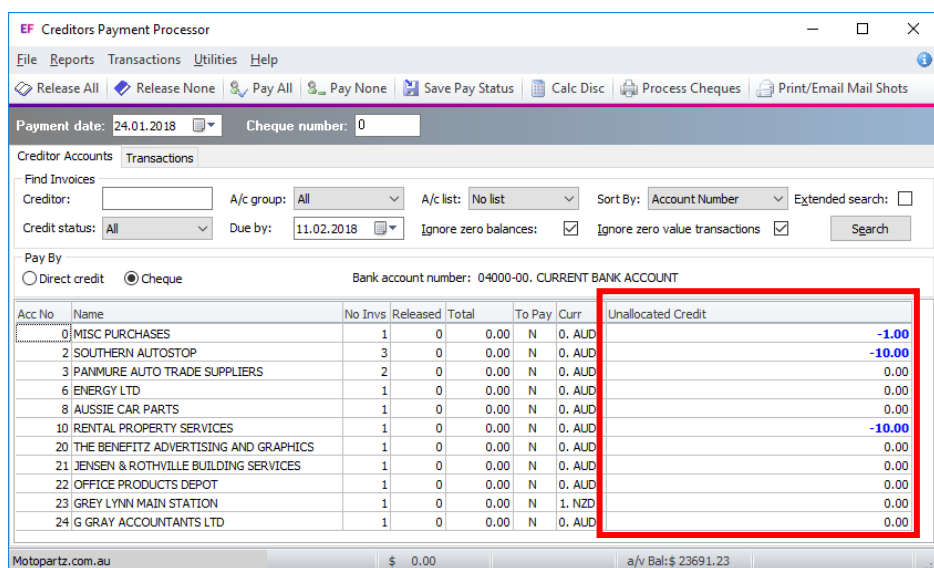
A **Nett Movement** field has been added to the bottom of the Bank Feeds Transaction Entry window:



This field is calculated as Income total – Expenses total.

## Unallocated Credits in the Creditors Payment Processor

An **Unallocated Credit** column has been added to the Creditor Accounts tab of the Creditors Payment Processor:

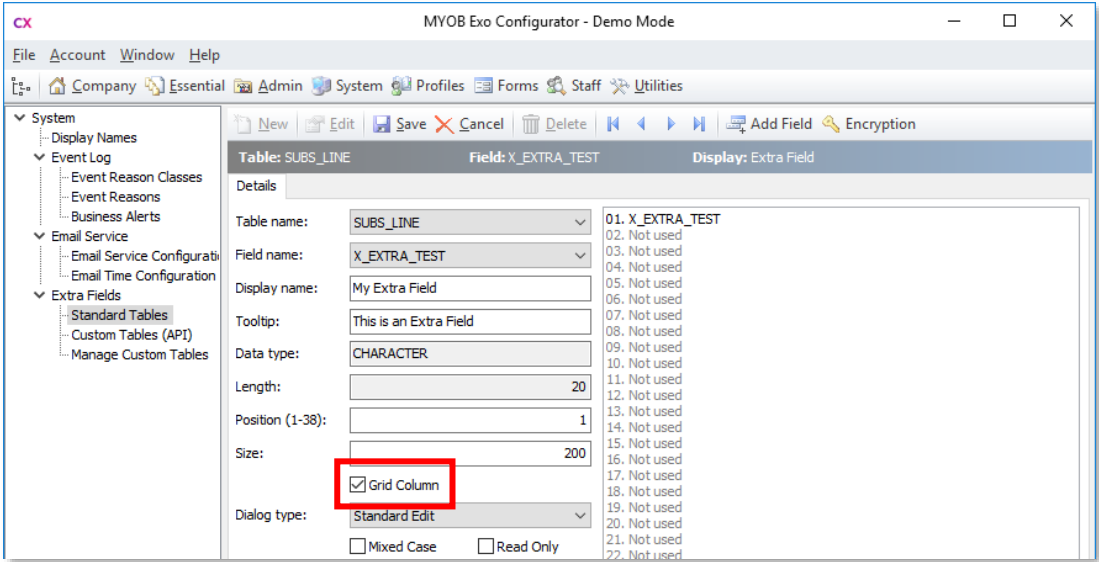


This shows the value of any unallocated credits for each account, so that you can address them before creating any payments.

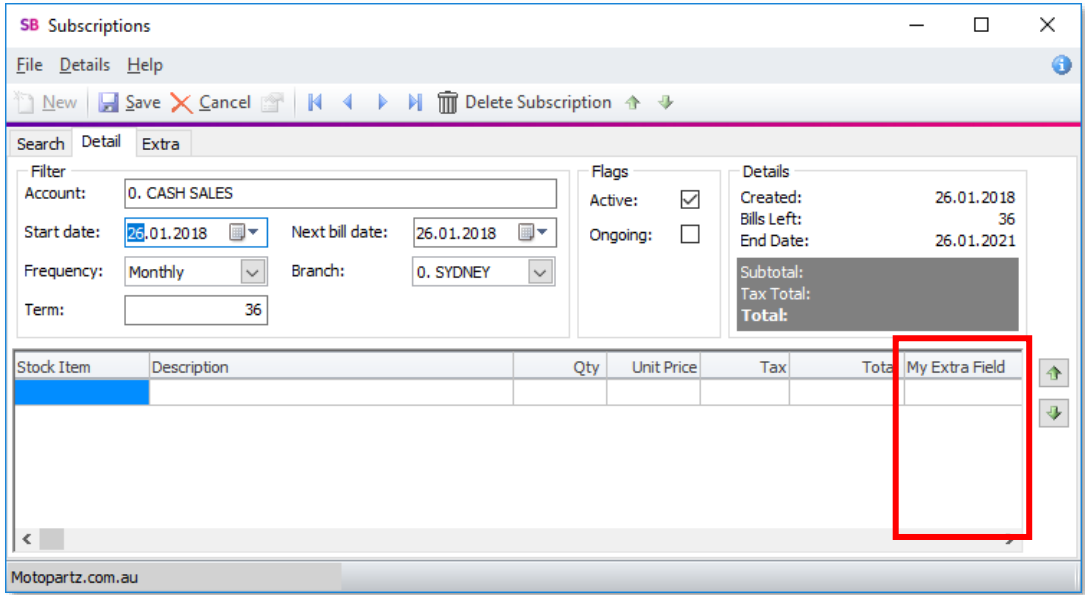


## Grid Column Extra Fields on Subscriptions

When setting up Extra Fields on the SUBS\_LINE table, the **Grid Column** option is now available:



When this option is ticked, Extra Fields will appear as columns in the main grid on the Subscriptions window:

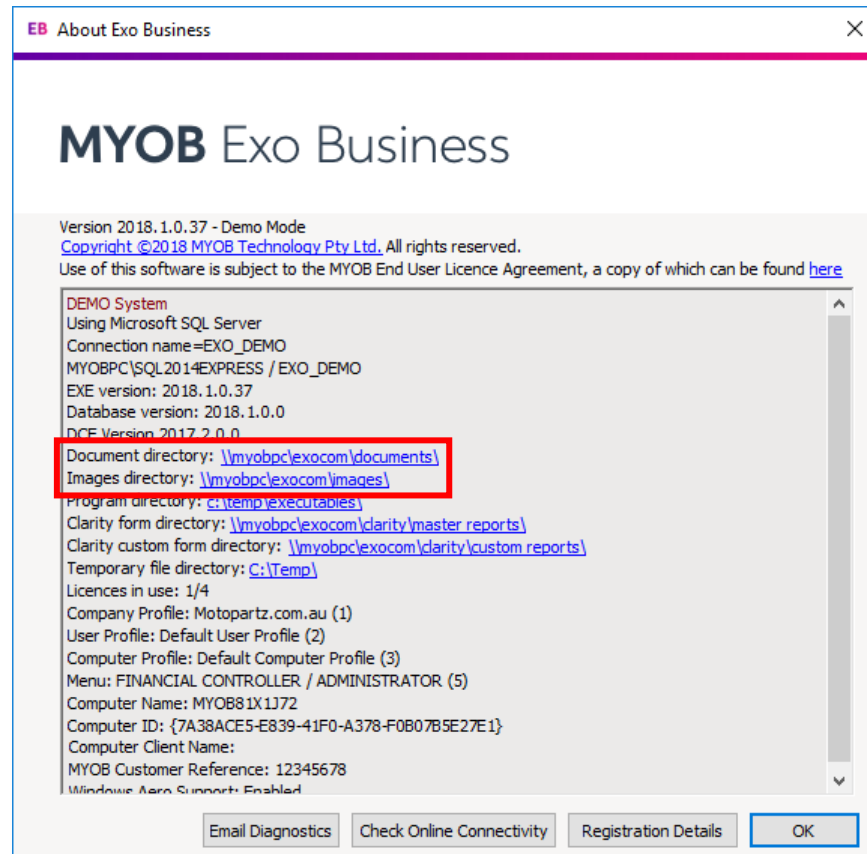


## Scroll Wheel Support on Report Widgets

The mouse scroll wheel can now be used to scroll Clarity dashboard widgets (previously, Clarity widgets could only be scrolled using the scroll bars on the widget.)

## Updates to the About Window

The About Exo Business window now displays the Document directory and Images directory (as set by the profile settings **Folder location for documents** and **Folder location for images**):



## New Field for Taxable Payments

When submitting the Taxable Payment Annual Report (TPAR) to the ATO using Standard Business Reporting, Creditor addresses must be formatted according to the ATO's specifications. The **Purpose** property of Display Names is used to determine which address field maps to which field in the TPAR. However, the format requires a "Locality" field, which does not always map conveniently to a meaningful Creditor address field.

This release adds a TAX\_LOCALITY field to the CR\_ACCS table, which is assigned the "Locality" purpose—this field can be used to store a Locality for each Creditor. The field does not appear in the Exo Business user interface by default, but it can be exposed as an Extra Field.

When retrieving geolocation information for a Creditor, the TAX\_LOCALITY field is automatically populated with the "Neighbourhood" information from the geolocation data.

## Performance Improvements

This release includes improvements to system performance that significantly speed up the operation of the Post Ledgers to GL function. There is no change in functionality.

## Report Updates

As part of an ongoing commitment to improve the reporting experience, several standard reports have been modified or re-written in this release to take advantage of new report writer features added during 2017:

- CRTAgedBalsRetro.CLR – Creditors Ageing Summary (Retrospective)
- CRTpayables.CLR – Creditors' Payables
- DRTAgedBalsRetro.CLR – Debtors Ageing Summary (Retrospective)
- GLMDetailbyBranch.CLR – General Ledger Detail by Branch
- GLMovement.CLR – General Ledger (Detail)
- GLMovement\_Bal.CLR – General Ledger Movement Report for B/S Accounts
- GLMovement\_PL.CLR – General Ledger Movement Report for P & L Accounts
- GLMTrialBal.CLR – General Ledger Trial Balance
- GLTBatchList.CLR – General Ledger Transaction List by Batch
- TAXbyRateType.CLR – GST report grouped by rate type (Invoice Basis)
- TXTaxRateList.CLR – Tax Rates Listing

Report updates include simplification to remove excessive sub-reports, more parameters and sensible parameter defaults, the addition of alternate row highlighting to improve their readability and changes to improve the reports' ability to export to XLSX.

# Resolved Issues

## Exo Business Core

Service Request ID	Description
<b>14555335619</b> 152278299841 144366470204	If a Debtor's default Contact's email address or the Statement Contact email address were blank, the Debtor account would have no email address against it when sending statements via mailshot—the system did not fall back on the Debtor's email address. This has been resolved; the GetStatementEmail function controls this logic.
<b>15131778220</b> 151279246251 151279246265	After duplicating a Creditors Invoice with a discount on it, the discount would be calculated incorrectly on the new invoice. This has been resolved.
<b>12239562339</b> 152999529301 12232346801	When a Standing Order was processed, narratives on the order (lines and header) were sometimes not copied to the created invoice. This has been resolved.
<b>150398151324</b> 150397164202	When generating a Creditors Invoice from an Inwards Goods Receipt, all the columns correctly included any discount percentage, but the extended invoice line values were computed ignoring the discount. This has been resolved.
-	Access violation errors occurred when attempting to copy a record that had one or more Extra Fields with an event defined. This has been resolved.
-	If a Creditor Invoice had an Invoice number that was 19 or more characters, when a credit was generated for the invoice, "CR" would be appended to the invoice number automatically as a prefix. This could make it longer than Invoice field length, causing an unhandled exception error when the credit was saved.  This has been resolved; in this situation, the message "The invoice no should not exceed 20 characters is displayed" and the credit cannot be saved until the invoice number is edited.
-	The Stock Analysis widget calculated the <b>Year to date</b> value under Units Sold incorrectly for periods that resulted in a net credit. This has been resolved.
-	If a user maximised the main window of an Exo Business module and saved it in that position, then when Refresh Settings was selected from the File menu, the window would return to its default size and position. This has been resolved.
-	An error would occur if a user added a widget to a dashboard, then closed the widget and tried to add it again. This has been resolved.
-	When setting up Extra Fields, in some cases the system did not correctly validate that the selected Position was free. This has been resolved.
-	The GL Trial Balance Tree displayed accounts incorrectly when the -00 level of an account had no balance but the -01 or -02 subaccounts did, and the <b>Hide zero balance</b> option was enabled. This has been resolved.

-	The keyboard shortcuts for creating new Sales Orders or Sales Order Quotes (Alt+Q, Ctrl+Q, Alt+O and Ctrl+O) could be used to create a new record even while editing an existing one, or when focussed on another window or drilldown, which could cause confusion. This has been resolved.
---	---

## Exo Business Config

Service Request ID	Description
-	After adding a new module on the Registration section, the new module would appear in the grid, but the Module column would be blank until refreshed. This has been resolved.

## Exo Job Costing

Service Request ID	Description
<b>19858673129</b> 149221519176 149221519154 149221519131 121679723531 111583086421 19210392691	When creating an invoice from the Billing Schedule tab of the Job Details window, discounts on the line(s) in the schedule being invoiced would not be copied to the invoice, and the calculated GST value would be incorrect. This has been resolved.
-	If a Business Alert with a "Blocking" rule was set up for jobs, it was possible to post lines of a job to invoicing, commit the invoiced lines, then trigger the rule when attempting to save the job, which would mean the invoice was saved but the job lines weren't. This has been resolved; the system now checks that the job has been saved before processing an invoice, ensuring any active rules will be triggered.

## Exo Fixed Assets

Service Request ID	Description
-	It was possible for an asset's Tax and Book depreciation values to be different even when all related settings were the same, due to a date range issue in the formula in the depreciation calculation stored procedure. This has been resolved.

## Clarity Reports

Service Request ID	Description
<b>149794391446</b> 151668810891 149676413561	The error "Could not convert variant of type (Null) into type (String)." appeared if the Creditors Allocation Listing report (CRTAllocListing.CLR) was run without setting both of the Order By parameters. This has been resolved.
-	Hovering the mouse over the Email Report button on the Print Preview window would export the report and open Outlook automatically. This has been resolved; the report is only emailed when the button is clicked.
-	When a Clarity report was displayed as a dashboard widget, it could not be scrolled using the mouse scroll wheel. This has been resolved—the scroll wheel can now be used on Clarity widgets.
-	When a report was run from the command line with the /A=N flag set, the Print dialog did not appear when the report was printed from the Preview window; instead the report would be printed to the Windows default printer automatically. This has been resolved.
-	Clarity did not release all of the memory it used until the launching program was shut down. If the report returned a large amount of data, this could cause "out of memory" errors if a report was opened and closed many times in a single session. This has been resolved.

# Known Issues

The following issues have been identified as requiring end-user attention in this release.

## Installation/Upgrade Issues

- If you are using the MYOB Exo Business Installation Wizard to install an instance of SQL Express, the following must be present on the PC:
  - .NET Framework 3.5 SP1 – you can download this from: <http://go.microsoft.com/fwlink/?LinkId=120550>
  - Windows Installer 4.5 – you can download this from: <http://go.microsoft.com/fwlink/?LinkId=123422>
  - Windows PowerShell 1.0 – you can download this from: <http://go.microsoft.com/fwlink/?LinkId=120552>
- Due to security settings imposed by Windows, CHM Help files cannot be viewed from a remote location—this means that you can only view the Exo Business CHM Help files if they have been installed on the local PC. See [Microsoft Knowledge Base article 892675](#) for more information on this issue and suggested workarounds. (This issue does not apply if you are viewing online Help files on the Exo Business Education Centre.)

## Demo Data Issues

The stored procedure SP\_DEMO\_DATA\_DATE\_UPDATER, which updates the data in demo databases to the current date, was updated in Exo Business 8.4. This stored procedure is only available in the EXO\_DEMO database, which means that any existing demonstration databases used by partners will not be able roll their demo data forward; these databases will need to be re-created based on the updated EXO\_DEMO database in order to use the updated SP\_DEMO\_DATA\_DATE\_UPDATER procedure.

## Job Costing Resource Issues

When a resource allocation is created, an Activity for the relevant staff member is automatically created in the Exo Business system; however, if the resource is not associated with a staff member, the Activity will not appear on the Activity Search widget on the Task Scheduler tab.

As a workaround, a dummy staff account can be created to associate non-staff Resources with.

### SQL Server 2012 Issues

All versions of SQL server 2012 exhibited a subtle, but now well-known change in default behaviour with regard to identity or auto number sequences. In MYOB Exo Business, this would be experienced as an unexpected anomaly where number sequences could apparently spontaneously jump by increments of 1000 if the SQL server was restarted.

This behaviour was reversed in SQL server 2014, but no known solution exists for completely preventing this behaviour in any versions of SQL server 2012, other than to upgrade to SQL server 2014 to completely eliminate the potential for this issue to occur.

### SQL Server 2008 R2 prior to SP3

MYOB Exo Business uses a SQL Server feature called Common Language Runtime Integration. This feature was disabled by default in versions of SQL Server 2008 R2 prior to Service Pack 3. If this feature is not enabled, users may encounter the following error during the upgrade process:

Updating server configuration: 'clr enabled'

### Emailing from the Print Preview window

When sending a report by email from the Print Preview window, the system does not determine the email address related to the document being emailed (e.g. the relevant Creditor's email address for Creditor documents). The email address is left blank—you must enter the address manually.

### Undefined Custom Buttons appearing on some windows

On some windows, e.g. Purchase Orders and Sales Orders, if no Custom Buttons for the window were defined, i.e. if the Custom Button profile settings relating to the window were left blank, captionless Custom Buttons appear in the window toolbar. These buttons have no functions attached—clicking them does nothing.



# Appendix 1: Profile Settings

The following profile settings have been added or modified in this release.

Name	Profile Name	Level	Description	Default	Refer
Folder location for documents Folder location for images	DOCUMENTSDIR IMAGESDIR	Computer	These profile settings have not been changed, but their values are now displayed on the About window as well as in Exo Business Config.		page 7