

MYOB Exo Business

Release Notes

2017.2

myob

Contents

Introduction	1
What's New in this Release?.....	1
Installation	2
Pre-Install Requirements	2
Other Requirements	2
Installing MYOB Exo Business.....	2
Post-Installation.....	3
Logging in to Exo Business.....	3
New Features	4
Important Upgrade Notice.....	4
Exo Fixed Assets Refresh	4
Main Form	4
Asset Setup.....	5
Asset Search	6
Copying Assets	6
Depreciation Stored Procedure.....	6
Support for exo:// Protocol	6
Asset Management	7
Installer Update	9
Interface Updates	9
Purchase Order Window	9
Works Order Costs.....	9
Staff Details	9
Report Parameters and Preview Windows.....	10
Reprinting Creditor Remittances	11
User Feedback.....	11

Resolved Issues	12
Exo Business Core	12
Exo Job Costing	13
Exo Clarity	14
Exo Accountant's Assistant.....	14
Exo Fixed Assets.....	15
Known Issues	16
Appendix 1: Profile Settings	18

Introduction

What's New in this Release?

The 2017.2 release introduces a refreshed interface for the Exo Fixed Assets module, adding features that are standard for other modules in the Exo Business system. This release also includes interface updates to other modules, and addresses issues identified in previous releases.

This release includes the 2017.2.1 Service Pack release, which addresses and issue identified in the Exo Fixed Assets module.

The purpose of this document is to provide essential information on the installation and use of this release:

- The **Installation** section provides an overview of the installation process, including pre-installation requirements and post installation steps.
- The **New Features** section describes all new features introduced in this release.
- The **Resolved Issues** section describes all issues that have been addressed by this release.
- The **Known Issues** section details any issues in this release that have been identified as requiring attention.
- The **New Profile Settings** appendix at the end of this document summarises all changes to Exo Business profile settings included in this release.

Installation

Pre-Install Requirements

Minimum system requirements for PCs running MYOB Exo Business components are detailed below. Full details of requirements and supported operating systems for MYOB Exo Business are available on the [Minimum System Requirements page on the Exo Business Education Centre](#).

The performance of the Exo Business system is not assured if these requirements are not met. Similarly, performance cannot be assured if the Exo Business system is installed on a server that is already under load from other processes, or a RDBMS that is not suitable for the organization's volume of data.

Other Requirements

Certain features of MYOB Exo Business require one or more of the following:

- Internet access
- Microsoft Internet Explorer 7.0 or later
- Adobe® Acrobat Reader 7.0 or later

Microsoft Office connection requires Microsoft Word/Excel 2010 to 2016.

Contact synchronisation requires Microsoft Outlook 2010 to 2016.

MYOB Exo Business 2017.2 requires **ExonetLib.dll** version 2017.2.0 or later. Version 2017.2.0 is included with this release.

When installing manually on 64-bit operating systems, the file **RwEasyMAPI64.exe** must be copied from the **Supporting Files\RapWare** folder of the Exo Business DVD to the install directory. Register this file by running `RwEasyMAPI64.exe /regserver` from a command prompt.

Installing MYOB Exo Business

Information on installing and upgrading MYOB Exo Business is available on the MYOB Exo Business Education Centre—see the following pages:

- [Installing Exo Business](#)
- [Installing Exo Business Services](#)

Post-Installation

Once MYOB Exo Business software is installed, it must be configured for use. Optionally, data can be migrated into the Exo Business system from another MYOB product. The configuration and migration processes are detailed in the *MYOB Exo Business Implementation Guide*.

Logging in to Exo Business

New MYOB Exo Business databases are installed with one or more default user accounts. When logging in to Exo Business for the first time, you must supply the following login details.

For a new blank database (EXO_LIVE):

- Default admin user = ExoAdmin
- Default admin password = ExoAdmin

For the demonstration database (EXO_DEMO):

- Default admin user = ExoAdmin
- Default admin password = ExoAdmin
- Default demo user = demo
- Default demo password = DEMO

Note: Passwords are case-sensitive.

New Features

Important Upgrade Notice

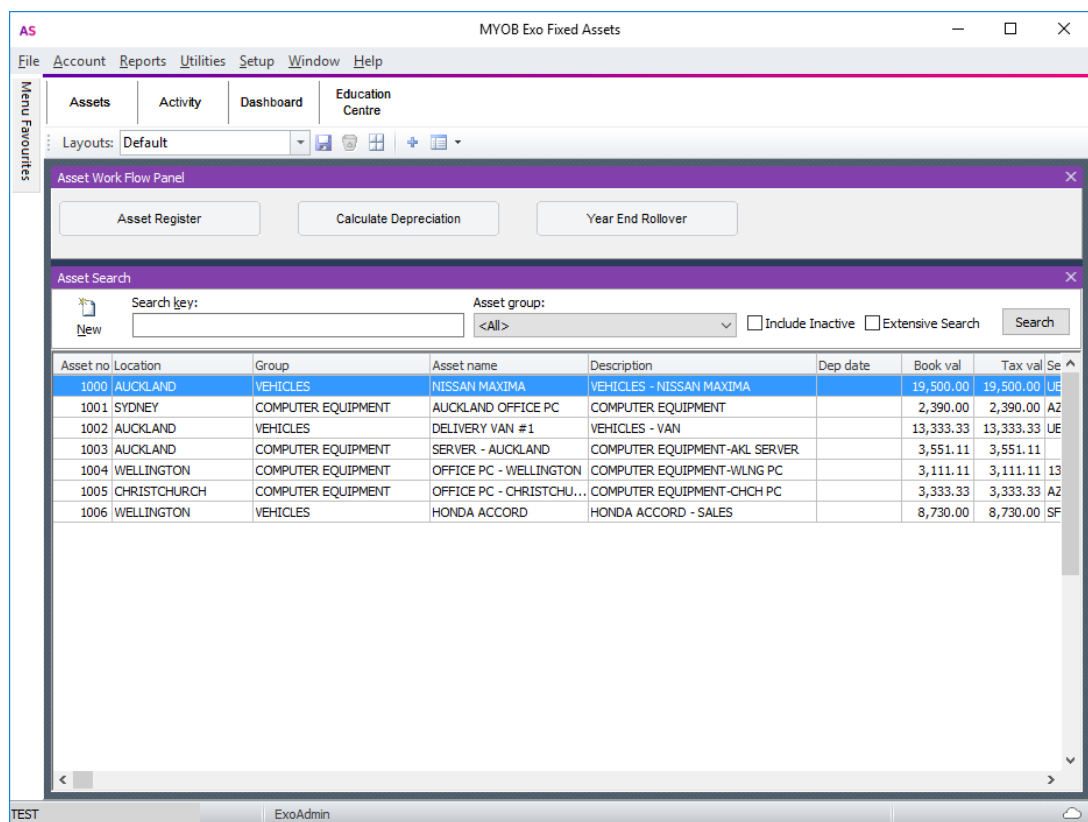
The **Exonetlib.dll** DLL has been updated in this release. When upgrading manually, make sure to install and register the upgraded DLL—its version number should be 2017.2.0 or later.

Exo Fixed Assets Refresh

This release updates the MYOB Exo Fixed Assets module, adding numerous features that are standard in other Exo Business modules. This provides a stable foundation for updates to asset management functionality, to be introduced in future releases.

Main Form

The main form of Exo Fixed Assets now features a Menu Favourites sidebar and standard business flow menus—you can set up and edit business flow menus for Exo Fixed Assets in Exo Business Config in the same way as you can for other modules. A default menu, including tabs with dashboards, is added in this release:



The default business flow menu has the following tabs:

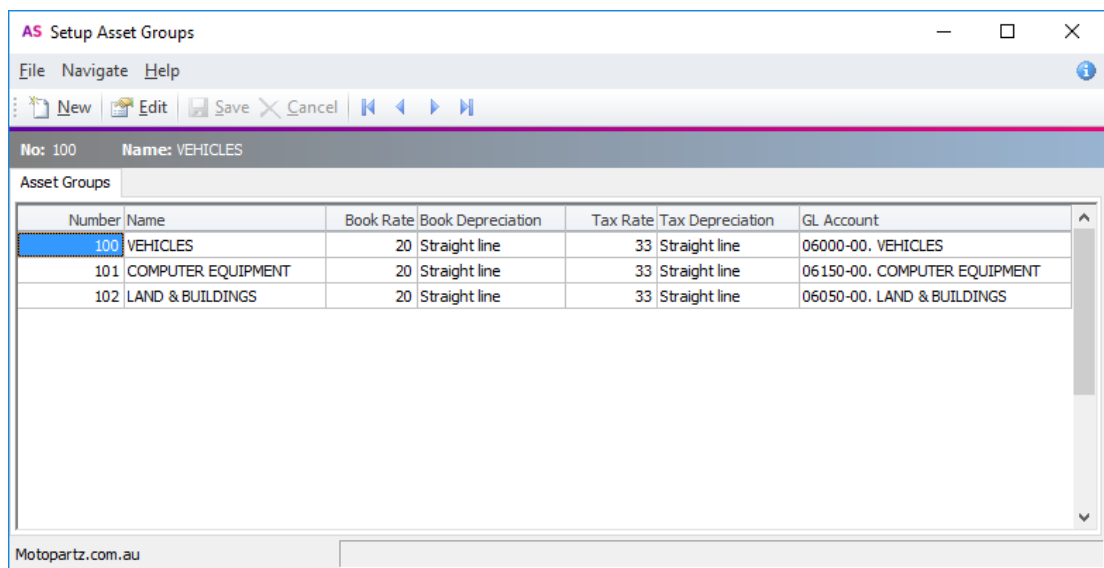
- Assets – This tab contains a dashboard layout with new widgets that let users access asset records and functions.
- Activity – This tab contains the standard Activity Search and Recent Items widgets (recently used assets now appear on the Recent Items widget).
- Dashboard – this tab contains an empty dashboard interface, where you can place your own custom dashboard widgets.
- Education Centre tab – This tab displays the standard Education Centre widget, which displays the Education Centre website inside the Exo Fixed Assets interface.

The default dropdown menu has also been updated in this release. New options, including the Menu Designer and Setup Widgets windows can be added to Exo Fixed Assets. New setup windows for Asset Groups and Asset Locations (see below) are available for adding to menus, where previously they could only be accessed from Exo Business Config.

Asset Setup

Setup options for Exo Fixed Assets can be configured in the Admin section of Exo Business Config as in previous releases. This release adds separate windows for the Setup Asset Groups and Setup Asset Locations sections, which can be added to dropdown menus in Exo Fixed Assets

New columns are available on the search screen of the Setup Asset Groups section and window, showing more information about each group:



The screenshot shows a software window titled "AS Setup Asset Groups". At the top, it displays "No: 100" and "Name: VEHICLES". Below this is a table with the following columns: Number, Name, Book Rate, Book Depreciation, Tax Rate, Tax Depreciation, and GL Account. The table contains three rows of data.

Number	Name	Book Rate	Book Depreciation	Tax Rate	Tax Depreciation	GL Account
100	VEHICLES	20	Straight line	33	Straight line	06000-00. VEHICLES
101	COMPUTER EQUIPMENT	20	Straight line	33	Straight line	06150-00. COMPUTER EQUIPMENT
102	LAND & BUILDINGS	20	Straight line	33	Straight line	06050-00. LAND & BUILDINGS

The window also features a menu bar with "File", "Navigate", and "Help", and a toolbar with icons for "New", "Edit", "Save", "Cancel", and navigation arrows. The footer of the window displays "Motopartz.com.au".

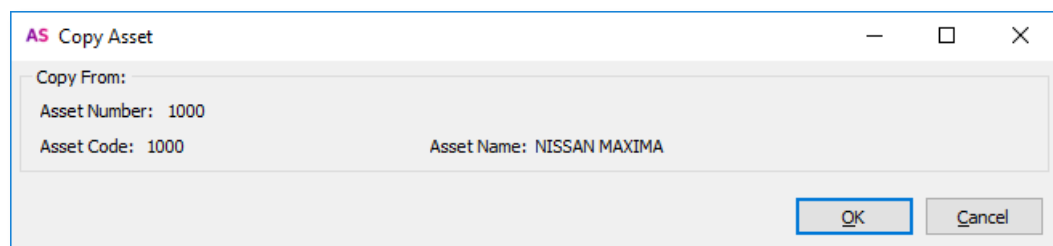
Asset Search

A new Asset Search dashboard widget is available. This widget functions in the same way as the existing search window for assets, and is available on the default business flow menu added in this release.

Exo Fixed Assets now supports the Extra Search Fields functionality that is available for other search windows. To add search fields to the Asset Search window/widget, configure the new **Extra Fixed Assets Search Fields** profile setting—this setting works in the same way as the existing settings for other search windows.

Copying Assets

This release adds the ability to speed up the creation of assets by copying an existing asset. Copy an asset by right-clicking on it in the search window/widget and selecting **Copy**. A confirmation window appears, showing the details of the asset being copied:



Click **OK** to create a new asset record with the same details as the original. The new asset will default to the same name as the original record's, but the Asset Number will be unique and the Asset Code will be blank, so must be entered before the new asset is saved.

Depreciation Stored Procedure

The depreciation calculations used by Exo Fixed Assets have been moved to a stored procedure in the Exo Business Database. The new procedure, **CalculateAssetDepreciation**, performs the same depreciation calculations as in previous versions; however, it can be modified and customised to change the depreciation functionality as necessary.

Support for exo:// Protocol

This release updates the exo:// protocol to support asset records. A new `fixedasset` command is available, which can be used in two ways:

- `exo://fixedasset (x)` – opens the asset record with the specified Asset number.
- `exo://fixedasset?search=xyz` – searches for asset records that match the search terms.

Note: To use the new command, you must replace the **exoprotocolhandler.exe** file with the version of the file supplied with this release. This must be done on all PCs that use the exo:// protocol.

Asset Management

The main asset register window has been updated to support standard features from other Exo Business modules. The window's toolbar now includes standard **Save** and **Save & Exit** buttons, and the body of the window now organises information into tabs (see "New Tabs on Asset Records" on page 8).

The screenshot shows the 'AS Exo Fixed Assets' window with the following details:

Asset Code: 1000 **Asset Name:** NISSAN MAXIMA

Details Tab:

- Asset Number: 1000
- Asset Code: 1000
- Name: NISSAN MAXIMA
- Description: VEHICLES - NISSAN MAXIMA
- Parent Asset: (empty)
- Asset Group: 100. VEHICLES
- Serial No.: UE1323
- Invoice No.: 303133
- Branch No.: 0. SYDNEY
- Location: 100. AUCKLAND
- Custodian: 5. MALCOLM BREEN
- Supplier: 0. MISC PURCHASES
- Serviced by: NOT APPLICABLE
- GL Account: 06000-00. VEHICLES
- Depreciation A/C: 03300-00. DEPRECIATION
- Accum Depreciation A/C: 06200-00. ACCUMULATED DEPRECIATION
- Picture URL: (empty)

Extra Fields Tab:

- Warranty expiry: 23.09.2017

Summary/Status Section:

- Next Service Date: 05.12.2017
- Purchase Date: 23.09.2016
- Commission Date: 05.12.2017
- Purchase Value: 19,500.00
- Status: Active Sold Disposed of

Depreciation Rates:

- Book (%): 20 Straight Dim Value
- Tax (%): 33 Straight Dim Value

Depreciated Values:

	Book	Tax
Opening Value	19500.00	19500.00
Current Year	0.00	0.00
Depreciated Value	19500.00	19500.00
Last Depreciation Date		05.12.2017

Asset Details

Exo Fixed Assets now lets you specify an image for each asset, in the same way that images can be specified for stock items. A new **Picture URL** property is available on the main Asset Register window—click the edit button next to this field to select the image file to display. Images must be stored in the location specified by the **Folder location for images** profile setting.

A new  button is available on the Asset Register window's toolbar. Clicking this button displays the asset's image in a separate window.

This release updates the constraints on some asset details:

- The Asset Code is now required to be unique. (The Asset Code has always defaulted to the Asset Number, which is unique.)
- Name can be up to 40 characters now—this avoids names being truncated when an asset is created from a Creditor Invoice.

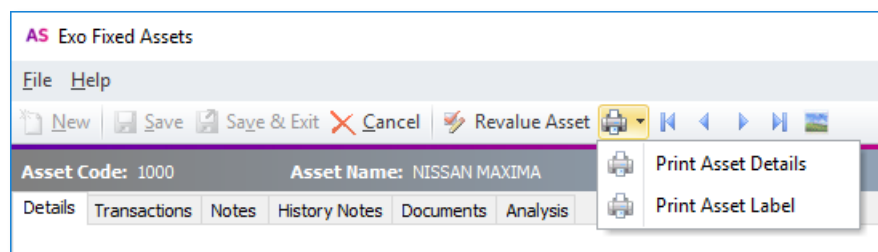
Extra Fields

Extra Fields can be set up on the ASSET_REG table—the first three of these fields now appear on the Details tab, with the rest on the new Extra Fields tab (see “New Tabs on Asset Records” below).

A new SUP_WARRANTY_EXPIRY field has been added to the ASSET_REG table. This field defaults to START_DATE + one year. It can be added as an extra field on the Exo Fixed Assets window or as a search field on the Asset Search window/widget (see “Asset Search” on page 6).

Reports

A new print button is available on the Asset Register window’s toolbar. This button contains a dropdown with options to print the new Asset Details (**AMDDetails.CLF**) and Asset Label (**AMLabel.CLF**) reports:



New Tabs on Asset Records

The Asset Register window is now a tabbed interface, containing standard tabs that are available on most other account windows. The asset code and name are always displayed above the tab bar.

The following tabs are available:

- Details – this tab contains the existing asset details from previous versions.
- Extra Fields – any Extra Fields that have been set up on the ASSET_REG table in position 4 and onwards appear on this tab.
- Transactions – this tab contains a dashboard layout with an Asset Transactions widget that displays all transactions related to the asset.
- Notes – a standard tab where users can enter freeform notes about the asset.
- History Notes – a standard tab where users can add, edit and delete more formal notes about the asset.
- Documents – a standard tab where users can add external documents to the asset account. As with other Documents tabs, users can open the Document Manager utility from this window, and documents can be added to the tab by dragging them onto the tab.

Note: Widgets on the Transaction dashboard can use the **Current Asset** parameter (@CURRENT_ASSET) to display data specific to the asset being edited.

Installer Update

This release updates the default SQL password when an instance of SQL Server Express Edition is installed using the Exo Business installer. The default logon details for the new instance will be:

- Username: **sa**
- Password: **Ex0admini\$trat0r**

The new default password meets current recommended password complexity levels.

Interface Updates

In addition to the Exo Fixed Assets refresh, this release includes updates to the user interface in other modules to display more information and improve usability.

Purchase Order Window

The Purchase Orders window has been updated to make it consistent with the Sales Order window:

- The window's status bar now shows the account's phone number and contact email address.
- Keyboard shortcuts are available for the New Order (Alt+O) and New Quotation (Alt+Q) options.

Note: The **Enable extended purchase order statuses** profile setting must be ticked to make these options available.

Works Order Costs

The system now records the stock transaction related to each line of a Works Order. This means that when reviewing a completed Works Order, the costs for each line are the costs that were actually used at the time the order was processed, where previously the order would display the current unit costs on each stock item.

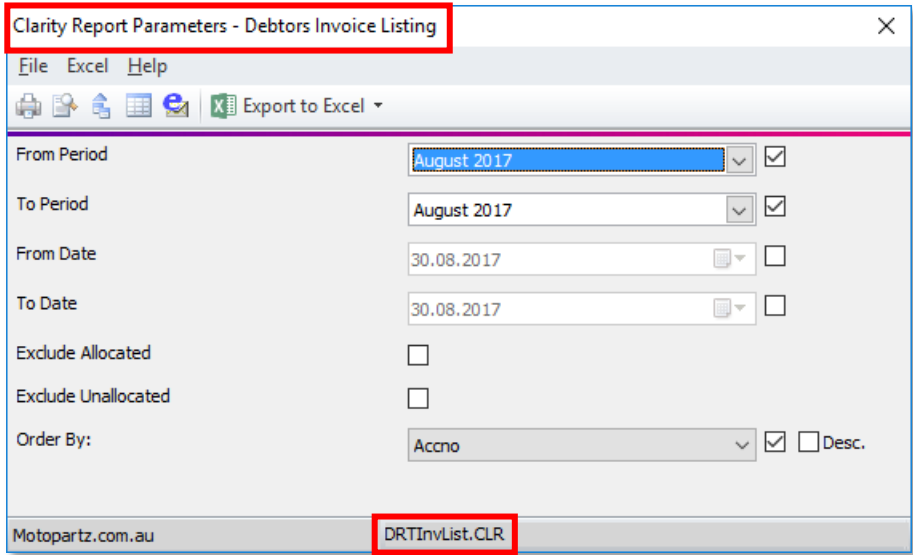
Staff Details

In previous releases, staff member's Name, Nickname and Job Title fields were required to be all capitals, e.g. JOHN MCDONALD. This release removes this restriction; staff details can now be in mixed case, e.g. John McDonald.

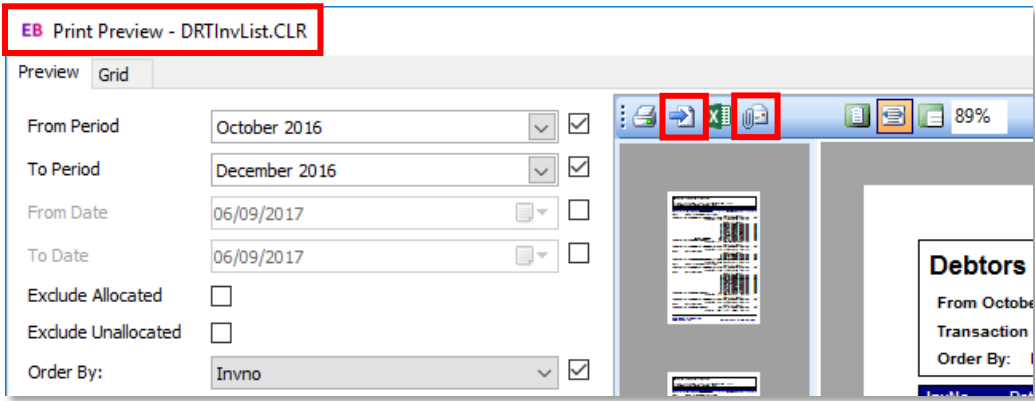
Report Parameters and Preview Windows

This release includes updates to the Clarity Report Parameters and Print Preview windows.

The Clarity Report Parameters window now displays the name of the report and the report's source file:



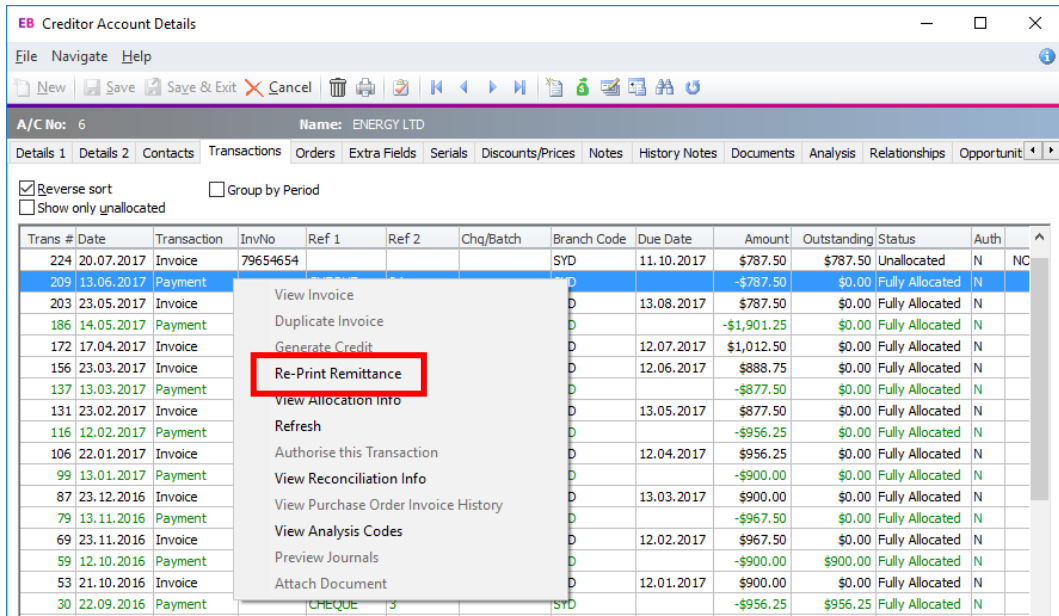
The report file is also displayed on the title bar of the Print Preview window, and **Print to File** and **Email Report** buttons are available on its toolbar:



Note: When printing to a file from either of these two windows, the location to save the file to now defaults to the location specified by the **Folder location for documents** profile setting, where previously it defaulted to the user's Temp directory.

Reprinting Creditor Remittances

This release adds the ability to reprint Creditor Remittance advice. A new **Re-Print Remittance** option is available when right-clicking on a payment on the Transactions tab of the Creditor Account Details window:



Clicking this button displays the Payment Remittance form (**CRPMTRemit.CLF**), which can be printed or emailed from the Print Preview window.

User Feedback

This release adds new options for sending feedback to MYOB. From time to time, a **Give feedback** button may appear on windows in the Exo Business system. You can click this button to open a window where you can provide feedback on your experience with the features that the window relates to.

We greatly appreciate any insights you can give us—your feedback will be used to guide the ongoing development of Exo Business.

Resolved Issues

Exo Business Core

Service Request ID	Description
11349491555 148200112931 148384174941 112905751421 13662784901 12178170031 11805951801 11649371821 11350038606 11349491562 11349491522 11298411875	When a Creditor Invoice was receipted from the new Purchase Order grid, incorrect GST rates could be added to the invoice lines. This has been resolved.
115563203646 137392034057 115490592727 117042614201 123393795971 137392034051 143461534111 147091362051	The amounts in the Sell Prices section of the Stock Item Details window were truncated if they had more than two decimal places. This has been resolved.
146740105684 146733062221 146658866371	If the profile setting Allow manual entry of discounts on creditor invoice and purchase order lines was disabled, the error “List index out of bound” appear when a user attempted to create a Creditor Invoice. This has been resolved.
142220356129 141682917320	When running a mailshot, only the first 50 characters of email addresses were passed in to the MailShot window, even though Debtor and Contact email addresses can be up to 60 characters. This has been resolved.
146593725537 146172383124	The Save column settings right-click option on the Purchase Order grid did not work—changes that had been made to the column layout were not saved. This has been resolved.
149181114490 149177395826	If a stock item’s cost price changes while a Sales Order was open, the old cost price would be used when the order was processed. This has been resolved.
-	When posting realised gains or losses via the Foreign Exchange Rate Variance Calculator, unrelated Debtor and Creditor transactions could be posted as well, resulting in ledger imbalance warnings. This has been resolved.
-	Fields in the status bar of the Works Orders window could overlap. This has been resolved.
-	When the Email client profile setting is set to “EXO SMTP”, the SMTP Server Settings window opens if a user attempts to send an email and the SMTP settings have not been set up. If the user clicked Cancel in this situation, then tried to send the email, the SMTP Server Settings window would reappear and could not be dismissed. This has been resolved.
-	It was not possible to add widgets to the Analysis tabs on various windows; when a widget was selected, the main form took focus instead of the dashboard pane. This has been resolved.

Resolved Issues

-	Debtors Batch Receipts posted to the General Ledger were incorrectly included in the Direct Postings amount, which could cause imbalances. This has been resolved.
-	After submitting a Bank Feed application, the Business Reference Number field would be blanked out, making submitting a subsequent application impossible until the user closed the Bank Feed Application window and re-opened it. This has been resolved.
-	The positioning of Extra Fields on the Creditor Invoice window was inconsistent with the rest of the system. This has been resolved; Extra Fields now appear in rows of three, i.e. the fields with the Position values 1 – 3 appear on the first row, fields 4 – 6 appear on the second row and so on.
-	If a Creditor account's Default Invoice Mode was set to "GL" and a default GL code was selected, then when creating a Creditor Invoice for that account, using the mouse scroll wheel would add new lines with the default code, as if the down arrow key had been pressed. This has been resolved.
-	If the Company Name entered on the Company Details screen of Exo Business Config included an ampersand (&), two ampersands would appear when the name appeared on other windows. This has been resolved.
-	Expense transactions created in the Integrated Cashbook were always saved as tax-inclusive, which could result in an incorrect GST amount appearing on the related invoice. This has been resolved.
-	When matching addresses on the Confirm Location window, if an address included a unit number, e.g. 5/24, the unit number would be omitted when the address was copied to the account's address. This has been resolved.
-	If an Extra Field of the type NVARCHAR had been defined for Sales Orders, it was not possible to copy a Sales Order when the Extra Field was blank. This has been resolved.

Exo Job Costing

Service Request ID	Description
128648751196 128480458864 146172383111	The Document Manager menu item did not work when added to a menu in Exo Job Costing. This has been resolved.
142403125117 142305640401	The Default Stock Code field on the Setup Job Resources window was hard-coded to 15 characters. This has been resolved; the size of this field is now based on the Stock item code size profile setting (which defaults to 23).
-	Fields in the footers of the Job Details window overlapped when they contained large values. This has been resolved.
-	Job write-offs did not handle serial numbers correctly. This has been resolved; when a serialised line is written off, the serial number record is now set to INSTOCK = 'N' and ISASSIGNED = 'N' (the same as if they had been Adjusted Out from the Stock Movement Transactions window). The JOB NO and JOBLINESEQNO are retained for audit/history purposes.

Resolved Issues

-	When the Exo Serviceable Units module was added to a system, no default Class, Make or Model records were set up, which meant that error messages would appear if a user tried to create a Serviceable Unit before setting up these records. This has been resolved; default records are created when Exo Serviceable Units is installed.
-	If Exo Serviceable Units was installed without Exo Job Costing, an error message would appear if a user clicked the New Job button on the Exo Serviceable Units window's toolbar. This has been resolved; clicking this button now displays a message informing the user that Exo Job Costing is not installed.
-	If the main Job Details window was maximised, it returned to its last saved size and position when the user clicked Save . This has been addressed—the window may resize the first time Save is clicked, but will remain maximised after that.
-	Extra Fields in positions 31 – 38 did not appear on Serviceable Units. This has been resolved.

Exo Clarity

Service Request ID	Description
12131033173 149012842471 148199082501 144037451071 136428753051 12122027381	Changing an OrderBy parameter on the Print Preview window and clicking Refresh did not update the ordering of the report. This has been resolved.
-	Unnecessary page breaks could appear in the output when a report with a large number of rows (more than 1,500) was exported to Excel. This has been resolved.

Exo Accountant's Assistant

Service Request ID	Description
125603771410 124498844684 130841685581 132419562911 137650295161 144340585601	The Unposted Transactions value on the Payables Reconciliation Exceptions report was incorrect, due to an error in the Creditors Imbalance Reasons function (FN_GET_CREDITORSLEDGER_IMBALANCEREASONS). This has been resolved.
-	The Orders List (Classic) widget displayed lost quotations as processed orders, which overstated the value or orders. This has been resolved.

Exo Fixed Assets

Service Request ID	Description
-	<p><i>This issue was resolved in the 2017.2.1 Service Pack.</i></p> <p>When posting asset depreciation transactions to the General Ledger, the accumulated depreciation leg of the depreciation posting had the GL Subaccount number set to the value of the GL Account number. This has been resolved.</p>

Known Issues

The following issues have been identified as requiring end-user attention in this release.

Installation/Upgrade Issues

- If you are using the MYOB Exo Business Installation Wizard to install an instance of SQL Express, the following must be present on the PC:
 - .NET Framework 3.5 SP1 – you can download this from: <http://go.microsoft.com/fwlink/?LinkId=120550>
 - Windows Installer 4.5 – you can download this from: <http://go.microsoft.com/fwlink/?LinkId=123422>
 - Windows PowerShell 1.0 – you can download this from: <http://go.microsoft.com/fwlink/?LinkId=120552>
- Due to security settings imposed by Windows, CHM Help files cannot be viewed from a remote location—this means that you can only view the Exo Business CHM Help files if they have been installed on the local PC. See [Microsoft Knowledge Base article 892675](#) for more information on this issue and suggested workarounds. (This issue does not apply if you are viewing online Help files on the Exo Business Education Centre.)

Demo Data Issues

The stored procedure SP_DEMO_DATA_DATE_UPDATER, which updates the data in demo databases to the current date, was updated in Exo Business 8.4. This stored procedure is only available in the EXO_DEMO database, which means that any existing demonstration databases used by partners will not be able roll their demo data forward; these databases will need to be re-created based on the updated EXO_DEMO database in order to use the updated SP_DEMO_DATA_DATE_UPDATER procedure.

Job Costing Resource Issues

When a resource allocation is created, an Activity for the relevant staff member is automatically created in the Exo Business system; however, if the resource is not associated with a staff member, the Activity will not appear on the Activity Search widget on the Task Scheduler tab.

As a workaround, a dummy staff account can be created to associate non-staff Resources with.

SQL Server 2012 Issues

All versions of SQL server 2012 exhibited a subtle, but now well-known change in default behaviour with regard to identity or auto number sequences. In MYOB Exo Business, this would be experienced as an unexpected anomaly where number sequences could apparently spontaneously jump by increments of 1000 if the SQL server was restarted.

This behaviour was reversed in SQL server 2014, but no known solution exists for completely preventing this behaviour in any versions of SQL server 2012, other than to upgrade to SQL server 2014 to completely eliminate the potential for this issue to occur.

SQL Server 2008 R2 prior to SP3

MYOB Exo Business uses a SQL Server feature called Common Language Runtime Integration. This feature was disabled by default in versions of SQL Server 2008 R2 prior to Service Pack 3. If this feature is not enabled, users may encounter the following error during the upgrade process:

Updating server configuration: 'clr enabled'

Emailing from the Print Preview window

When sending a report by email from the Print Preview window, the system does not determine the email address related to the document being emailed (e.g. the relevant Creditor's email address for Creditor documents). The email address is left blank—you must enter the address manually.

Appendix 1: Profile Settings

The following profile settings have been added or modified in this release.

Name	Profile Name	Level	Description	Default	Refer
Extra Fixed Assets Search Fields	EXTRA_ASSET_SEARCHFIELDS	User	Use this setting to configure extra search fields on the Asset Search window and widget.		page 4