

MYOB Exo Employer Services

NZ Edition

version 2022.01

Release Notes

myob

Contents

Introduction	1
What's New in this Release?	1
Installation	2
Pre-Install Requirements	2
Installing Exo Employer Services	2
Check the Release	2
New Features	3
Tax Updates	3
Student Loan Thresholds	3
ACC Rates and Thresholds	3
Password Enhancements	4
Pay Sheet Update	6
Known Issues	7

Introduction

What's New in this Release?

The version 2022.01 release contains updates to pay sheet CSV exports, improved password security, and tax updates for the 2022–2023 financial year.

The purpose of this document is to provide essential information on the installation and use of this release:

- The **Installation** section provides an overview of the installation process, including pre-installation requirements and post-installation steps.
- The **New Features** section describes all new features introduced in this release.
- The **Resolved Issues** section describes all issues that have been addressed by this release.
- The **Known Issues** section details any issues in this release that have been identified as requiring attention.

Need assistance? If you have any questions or you need assistance with installing this update, please contact your MYOB Accredited Business Partner. Alternatively, the answers to most common installation issues can be found on the [MYOB Exo Employer Services NZ Knowledgebase](#).

Installation

Pre-Install Requirements

Requirements for PCs running Exo Employer Services components are detailed in the Minimum System Requirements document, available on the [MYOB website](#).

Installing Exo Employer Services

Information on installing and upgrading MYOB Exo Employer Services is maintained on the MYOB Enterprise Knowledgebase. See the following articles:

- [Upgrading MYOB Exo Employer Services Online](#)
- [Upgrading MYOB Exo Employer Services Manually \(New Zealand\)](#)
- [How do I run Network.exe?](#)

Note: Check the Known Issues section on page 7 for any known installation issues.

Check the Release

After the installation is complete, the version numbers of all MYOB Exo Employer Services applications should be as follows:

Application	Version
MYOB Exo Employer Services	version 2022.01
MYOB Exo Payroll	version 2022.01
MYOB Exo Employee Information	version 2022.01
MYOB Exo Time and Attendance	version 2022.01
Runtime Files	09.00.0000.7423

To check that this release installed successfully, check that the versions displayed on the About window (**Help menu > About**) match the versions listed here.

New Features

Tax Updates

Student Loan Thresholds

This release updates the student loan thresholds for the 2022–2023 financial year. The new thresholds are:

Frequency	Threshold amount
Annual	\$21,268
Monthly	\$1,772.33
4-weekly	\$1,636
Fortnightly	\$818
Weekly	\$409

ACC Rates and Thresholds

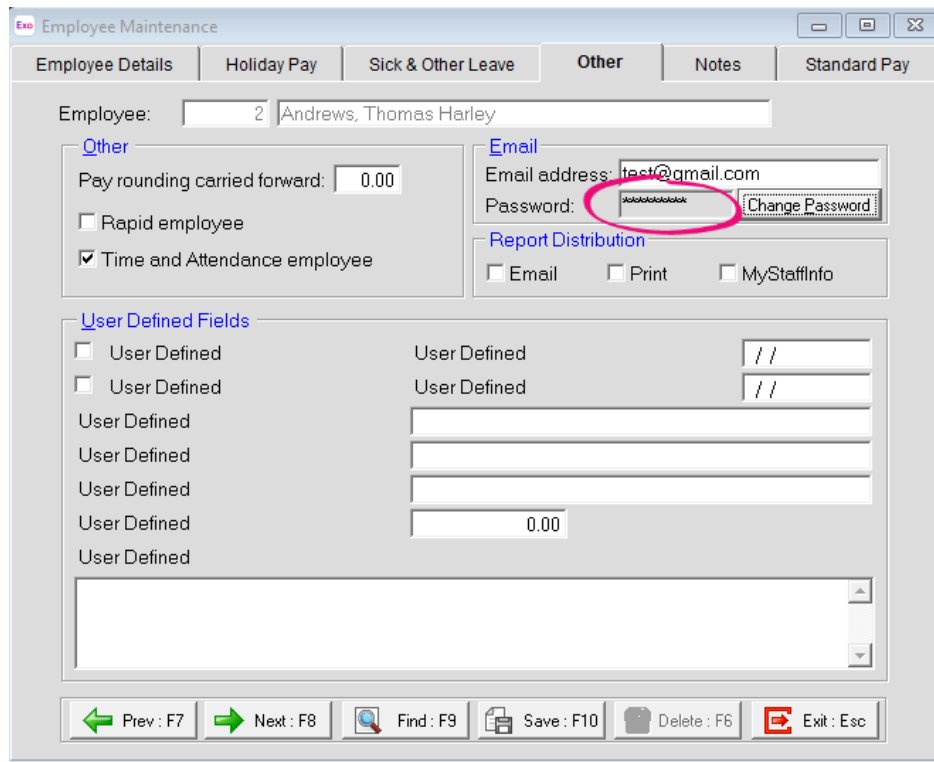
This release updates the Earners' levy rate per \$100 of liable earnings (including GST) for the 2022–2023 financial year to \$1.46 and the ACC Earner Levy new threshold are set to:

Frequency	Threshold amount
Employees and private domestic workers (Work and Earners' Accounts)	\$136,544
Self-employed people (Work and Earner's Accounts)	\$136,544

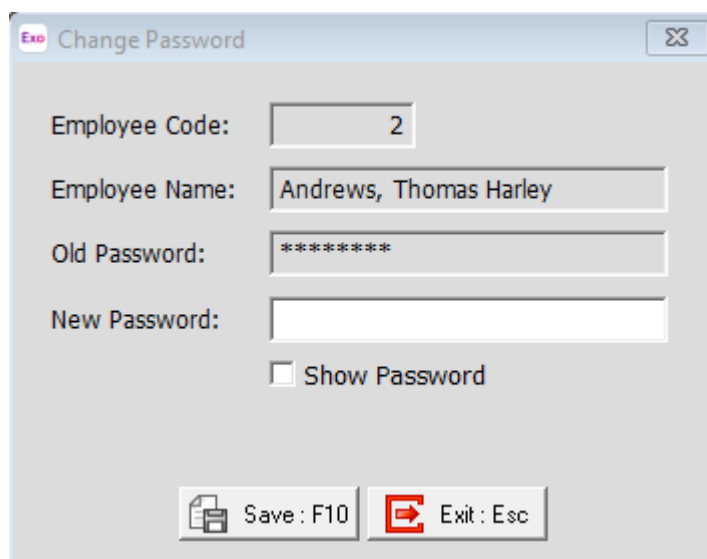
Password Enhancements

This release improves password security.

Passwords are now displayed as asterisks on the Payroll Audit report and on the **Other** tab of the Employee Maintenance screen.

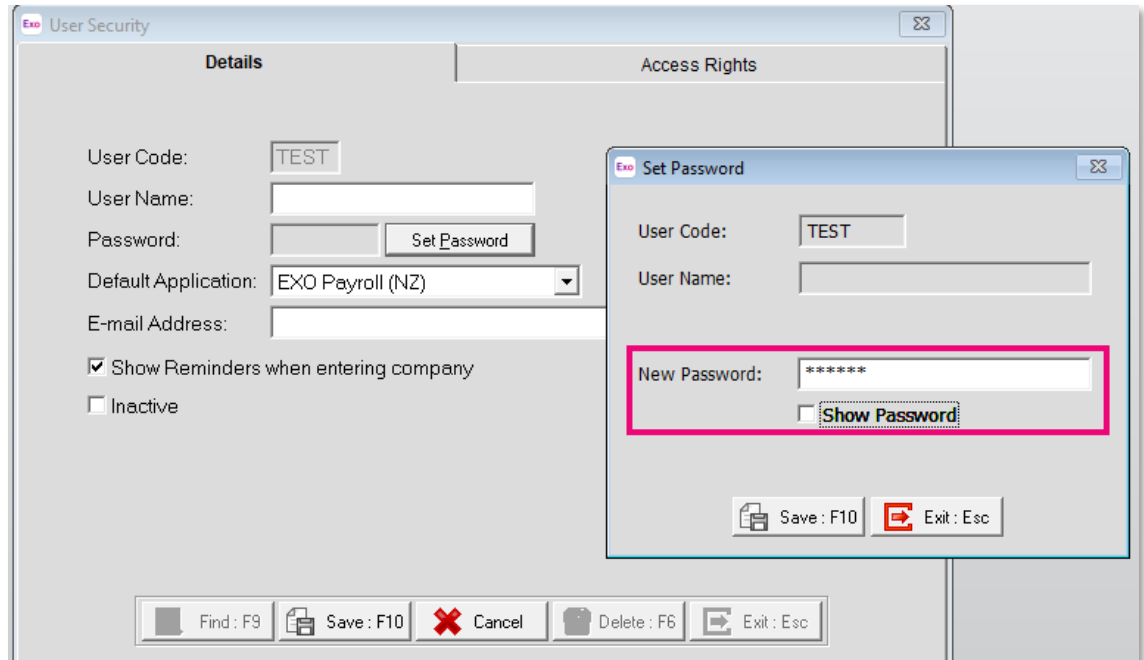


Additionally, if a user clicks **Change Password**, a new **Change Password** window opens, where they can set a new password for the employee.



New Features

The User Security screen no longer displays the user's password. If an administrator needs to change any user password, they can click **Set Password** to open the **Set Password** window. After saving a new password, the administrator can no longer see it.



Pay Sheet Update

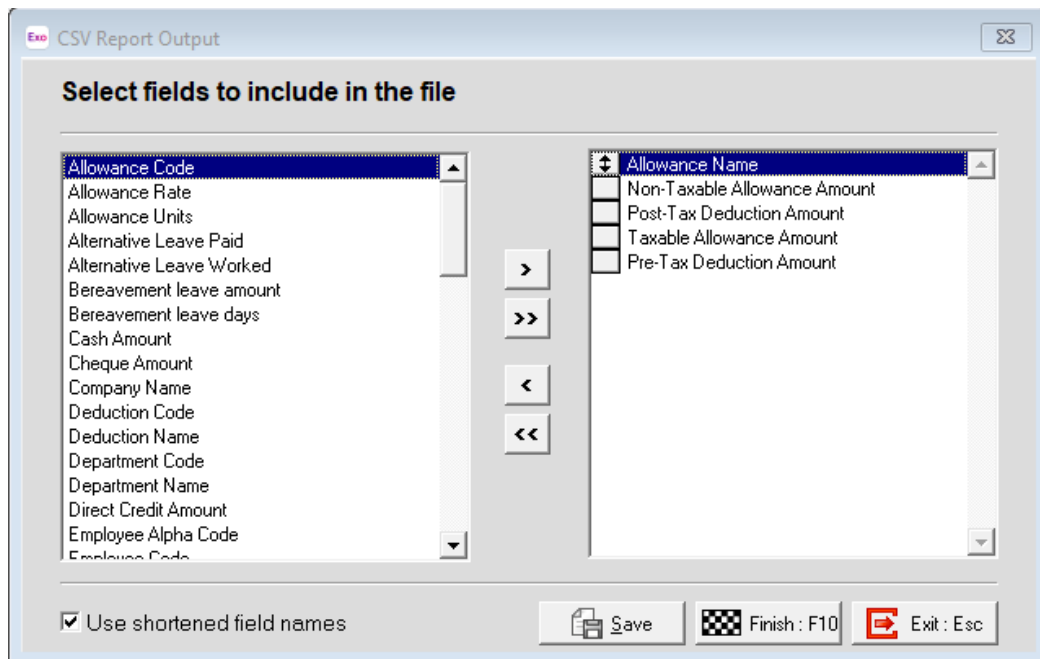
This release adds more options when exporting a pay sheet as a CSV file.

New field options have been added to the CSV Report Output window:

- **Allowance Name**
- **Non-Taxable Allowance Amount**
- **Post-Tax Deduction Amount.**

Two field options have been renamed:

- **Allowance Amount** is now **Taxable Allowance Amount**
- **Deduction Amount** is now **Pre-Tax Deduction Amount.**



Known Issues

The following Known Issues have been identified in this release.

Payments not liable for ACC Earners' Levy in a termination pay

The ACC Earners' Levy does not apply to redundancy, retirement allowance or Employee Share Scheme benefit payments. Exo Employer Services correctly calculates the tax for these when paid separately. If these are processed in a pay at the same time with a payment that is liable for ACC (e.g., leave payments), the payment will be over-taxed because the ACC Earners' Levy is applied to both payments. This only happens when payments with different liabilities for ACC are processed at the same time.

To fix this, we recommend that you run the payments that are not liable for ACC in a One-Off pay, separate from the payments that are liable for ACC.