

MYOB Exo Business White Paper

GL Movements and Period Handling

Last modified: 28 April 2017

Contents

GL Movements and Period Handling	1
Period Handling Changes in 6.18x.....	1
The 6.18x Database Update.....	1
Program Enhancements	2
New Utilities	3
Metadata Overview	5
Calculating GL Movements	6

GL Movements and Period Handling

This paper outlines changes that were made to period handling in version 6.18x to assist in retained earnings calculations, and also introduces the GL Movements table to provide an alternative reporting method for GL transactions.

This paper is intended for EXO Business partner use.

Period Handling Changes in 6.18x

Version 6.18x included changes to period handling that were designed to improve some current areas of functionality, and also provide a platform for future improvements, including:

- Adding the ability to detect the financial year of retained earnings transactions.
- Setting the foundation for possible future developments that could improve the performance of the month-end process, potentially avoiding the need to 'age' transactions.

The 6.18x Database Update

The database update to 6.18x added a unique period reference to the table that manages the period status, and retrospectively populates this period information in the GL transaction table.

Note: As the period of retained earnings transactions had not been recorded in previous data, the setting of the PERIOD_SEQNO was only a best estimate based on the previous transaction. The automatic setting of these transactions should be checked using the *Manage Retained Earnings* function detailed on page 3. See also

Note: Check Period Status of GL Transactions on page 4.

The DBUpdate for 6.18x makes the following changes:

The PERIOD_STATUS table is recreated:

- Adds a new field SEQNO as the primary key.
- Any missing records are inserted into the PERIOD_STATUS table, by checking the distinct list of PERIODNOs in GLTRANS for corresponding AGE records in PERIOD_STATUS

Adds a new field PERIOD_SEQNO to the GLTRANS table, and sets the value of this field:

- For general transactions, set the PERIOD_SEQNO from the PERIOD_STATUS table where the age is matched to the General Ledger age.

```
SET GLTRANS.PERIOD_SEQNO = PERIOD_STATUS.SEQNO
WHERE GLTRANS.PERIODNO = PERIOD_STATUS.AGE
AND PERIOD_STATUS.LEDGER = 'G'
```

- For retained earnings transactions (PERIODNO = -1), estimate the correct period by using the PERIODNO of the GLTRANS immediately before the retained earnings transaction (based on GLTRANS.SEQNO)

Program Enhancements

Maintain the unique period reference

The unique period reference (SEQNO field on the PERIOD_STATUS table) is maintained on insertion of new period records, e.g. on a period end roll.

Maintain the new unique period reference on GL Transaction records.

New GL Transactions were updated to also include the new unique period reference.

The POST_GL_TRANS trigger has been recreated to set the PERIOD_SEQNO on the insert of a new GLTRANS record, if it is null.

```
SET PERIOD_SEQNO = PERIOD_STATUS.SEQNO
WHERE GLTRANS.PERIODNO = PERIOD_STATUS.AGE
AND PERIOD_STATUS.LEDGER = 'G'
```

If PERIOD_SEQNO is null and PERIOD_NO=-1, match on PERIOD_STATUS.AGE = 0.

Assign the new unique period reference on retained earnings transactions

The year-end process (**Utilities > End of Period**) was modified so that generated retained earnings transactions are assigned the new PERIOD_SEQNO.

The general ledger transaction PERIOD_SEQNO is set to the current GL period, before the creation of a new PERIOD_STATUS record for the first period of the new financial year. That is:

```
SET GLTRANS.PERIOD_SEQNO = PERIOD_STATUS.SEQNO WHERE LEDGER = 'G' AND AGE=0
```

To manage prior-year transactions where a retained earnings transaction has not been generated, the **Update** function at **EXO Business Config > Utilities > General ledger > Utilities > Misc** can be used. This has been modified to assign the new PERIOD_SEQNO to the retained earnings transaction.

Clicking **Check Profit FWD** at **EXO Business Config > Utilities > General ledger > Utilities > Recalculate** also sets the PERIOD_SEQNO on any GLTRANS inserted (matching to oldest GLAGE).

GL Report Writer

The GL Report Writer was enhanced to use the new GLTRANS.PERIOD_SEQNO instead of PERIODNO, and consequently the retained earnings transactions are reported the same way as non-retained earnings transactions.

GL Account and Transaction Enquires

Changed to utilise the new period handling functionality. Period and sub-account totals use GLTRANS.PERIOD_SEQNO (and no longer use PERIODNO).

Intercompany Download

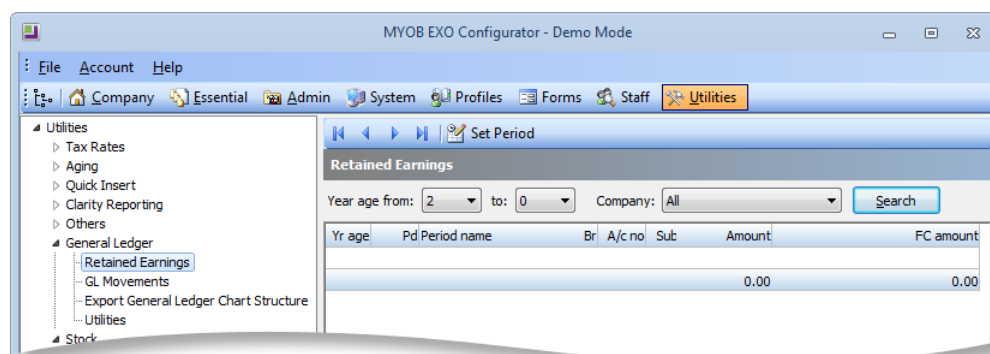
MYOB EXO Business Intercompany download uses the PERIOD_SEQNO of the GLTRANS being downloaded to establish the transaction's age, which is used to look up and set the consolidation database's PERIOD_SEQNO.

New Utilities

Manage Retained Earnings

A utility is provided to manage retained earnings. It is important to review the retained earnings after the 6.18x upgrade as the period these transactions are allocated to could only be done as a 'best estimate' during the DBUpdate. To run this utility:

1. Select **EXO Business Config > Utilities > General Ledger > Retained Earnings** to display retained earnings transactions for a given age range (and company for EXO Business Intercompany):



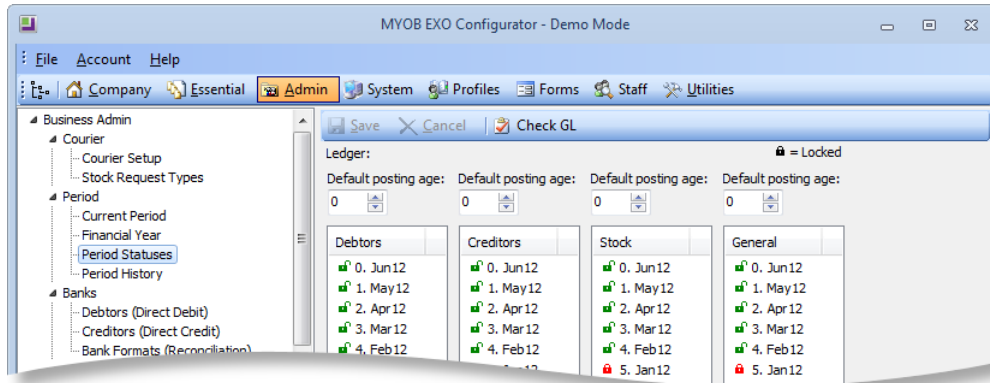
2. To alter the period of the retained earnings transaction, select the transaction and click the **Set Period** button on the toolbar. A dialog window listing the period options is displayed. Select the required period, and click **OK**. The PERIOD_SEQNO on the selected retained earnings GL transaction will be

changed to the selected PERIOD_STATUS record, (i.e. the correct financial year).

Check Period Status of GL Transactions

A new function is made available to insert missing period status records, and ensure the PERIOD_SEQNO has been set on GL Transactions. This is the same validation as performed during the 6.18x upgrade, so is not normally needed to be run manually. See *The 6.18x Database Update* on page 1.

1. Select EXO Business Config > Admin > Period > Period Statuses:



2. Click the **Check GL** button to ensure each GL Transaction is correctly linked to a PERIOD_STATUS record, or insert PERIOD_STATUS records if missing.

GL Movements Table

Version 6.18x introduced the GLMOVEMENTS table to provide a more efficient method to obtain YTD and period balances of GL accounts.

The existing GL_ACCS.BALANCE field is limited to the current balance at an account level. Previously, obtaining totals at sub-account or branch level, for past periods, or at a company level (for the EXO Business Intercompany module) required specific calculation. Now totals are maintained in the GLMOVEMENTS table for an individual GL Account Sub Account, by Branch by Period by Company.

Metadata Overview

New database structure has been added to create the GL Movements capability:

A new table GLMOVEMENTS has been created, with the following structure:

```
CREATE TABLE GLMOVEMENTS
(
  SEQNOINTEGER NOT NULL,
  ACCNOINTEGER NOT NULL,
  SUBACCNOINTEGER NOT NULL,
  BRANCHNOINTEGER NOT NULL,
  COMPANYNINTEGER NOT NULL, (For EXO Business Intercompany)
  PERIOD_SEQNOINTEGER NOT NULL, (See Period Handling)
  AMOUNTDOUBLE PRECISION DEFAULT 0 NOT NULL,
  AMOUNT_FCDOUBLE PRECISION DEFAULT 0 NOT NULL, (Foreign
Currency)
  PRIMARY KEY (SEQNO)
);
CREATE UNIQUE INDEX GLMOVEMENTS_INDEX;
CREATE PROCEDURE GET_GLMOVEMENTS_RECORD
CREATE PROCEDURE CALCULATE_GLMOVEMENTS
ALTER POST_GL_TRANS TRIGGER
```

The POST_GL_TRANS trigger has been modified so that on insert of a GL transaction, a check is done to see if a record already exists for ACCNO, SUBACCNO, BRANCHNO, COMPANYN, PERIOD_SEQNO.

- If a record does exist, then update GLMOVEMENTS.AMOUNT = GLMOVEMENTS.AMOUNT + GLTRANS.AMOUNT. The same for AMOUNT_FC.
- If a record does not exist, insert a new GLMOVEMENTS record, GLMOVEMENTS.AMOUNT = SUM(GLTRANS.AMOUNT).

PERIOD_SEQNO is the new field described in the section *Period Handling Changes in 6.18x* on page 1. The GLMOVEMENTS table does not need to be aged.

Calculating GL Movements

A utility is available to display, delete and recalculate the GL movements. This utility is also used to initially populate the GL Movement table, although GL Movement records will be inserted and maintained automatically as transactions are processed.

Note: Populating the GL Movements table for all existing transactions could take a considerable period of time, depending on the volume of GL transactions.

To manage GL Movements:

1. Select EXO Business Config > Utilities > General Ledger > GL Movements. The GL Movements utility is displayed.
2. Click the Calculate button on the toolbar to calculate the initial GL movements for the accounts/ branches/ periods/ companies specified in the selection options.
3. Select either a range of accounts or a specific account, and other required filter information, and click Search to display a list of the GL movements. A result similar to the following will be displayed:

A/c no	Sub A/c name	Br	Pd	Amount	FC amount
1000	0 SALES	0	12	\$53008.85	\$55631.66
1000	0 SALES	0	11	-\$10596.12	-\$10535.15
1000	0 SALES	0	10	-\$9951.01	-\$9683.28
1000	0 SALES	0	8	\$0.02	\$0.02
1000	0 SALES	0	0	-\$31135.92	-\$31135.92
1000	0 SALES	0		-\$5918.22	-\$5918.22
1000	0 SALES	1	10	-\$1325.82	-\$1325.82
1000	1 ELECTRICAL	0	12	-\$1115.04	-\$1115.04
1000	1 ELECTRICAL	0	10	-\$581.14	-\$581.14
1000	1 ELECTRICAL	0	9	-\$1066.00	-\$1066.00
1000	1 ELECTRICAL	0	8	-\$2642.84	-\$2325.05
1000	1 ELECTRICAL	0	7	-\$5981.77	-\$5082.92
1000	1 ELECTRICAL	0	6	-\$1141.80	-\$1032.30
1000	1 ELECTRICAL	0	5	-\$5491.90	-\$4500.71
				\$263567.83	\$139668.89

4. Clicking the **Calculate** button on the toolbar recalculates the GL Movements for the accounts/ branches/periods/companies specified in the header. Alternatively, highlighting rows on the grid, right-clicking and selecting **Recalculate** will recalculate only the selected rows.

Note: The hidden profile option **Maintain General Ledger Movements** can be used to disable the maintaining of GL Movements. It is not recommended to turn this option off without direct consultation with MYOB. Deletion of records is based on the selected criteria (or selected rows if right-click > Delete is used) and can be used to delete records if the GL movements function has been disabled. If all records are deleted through this utility, the identity seed is reset to zero so new records will start at 1.