

Network Implementation Guide

MYOB AccountEdge
Network Edition



© MYOB Technology Pty Ltd

MYOB Australia Pty Ltd

ABN 13 086 760 198

Website: myob.com.au

© MYOB Technology Pty Ltd 2009

All rights reserved.

Disclaimer

Information supplied by the member companies of the MYOB group (whether in user documentation and other literature, video or audio material, training courses, websites, advice given by staff, or provided by other means) is intended only to illustrate general principles, and may not be complete, accurate or free of error. As accounting standards, taxation requirements, legislation and the circumstances of individual businesses vary widely, this information cannot be considered authoritative and may not apply to your specific situation. You should obtain competent advice from a qualified accounting, taxation, information-technology or legal professional before acting on such information. To the extent permitted by law, member companies of the MYOB group are not liable for any special, consequential, direct or indirect damages arising from loss of function, profits or data resulting from your application of such information. In the event that any of the above limitations are found to be unenforceable, the MYOB member company's liability is limited to the return of any fees or monies paid for the purchase of the product or service.

Trademarks

MYOB[®], MYOB Accountants Office[®], MYOB AccountEdge[®], MYOB AccountEdge[®] Network Edition, MYOB Accounting[™], MYOB Accounting Plus[™], MYOB BusinessBasics[™], MYOB CashBasics[™], MYOB ClientConnect[™], MYOB FirstEdge[®], MYOB M-Powered[®], MYOB M-Powered Services[™], MYOB M-Powered Bank Statements[™], MYOB M-Powered Invoices[™], MYOB M-Powered MoneyController[™], MYOB M-Powered Payments[™], MYOB ODBC DeveloperPack[™], MYOB ODBC Direct[™], MYOB PowerPay[®], MYOB Premier[®], Accountants Office[®], AccountEdge[®], Accounting Plus[™], BusinessBasics[™], ClientConnect[™], FirstEdge[®], M-Powered[®], M-Powered Superannuation[™], ODBC DeveloperPack[™], ODBC Direct[™], PowerPay[®] and Premier[®] are registered trademarks or trademarks of MYOB Technology Pty Ltd and their use is prohibited without prior consent. Ceedata, Solution 6 MAS and Xlon are registered trademarks or trademarks of Solution 6 Holdings Limited, a member of the MYOB group.

4D Tools[®] is a registered trademark of 4D S.A. BPAY[®] is a registered trademark of BPAY Pty Ltd, ABN 69 079 137 518.

CaseWare[®] is a registered trademark of CaseWare International Inc. HandiLedger is a registered trademark or trademark of HandiSoft Software Pty Ltd. POSTbillpay[®] is a registered trademark of the Australian Postal Corporation.

Adobe[®], Acrobat[®], Acrobat Reader[®], Adobe Reader[®], PDF[™], and PostScript[®] are trademarks or registered trademarks of Adobe Systems Incorporated.

AddressBook, Apple[®], iCal[®], Macintosh[®], and QuickTime[®] are registered trademarks of Apple Inc. Mac and the Mac logo are trademarks of Apple Inc. used under licence. MobileMeSM is a service mark of Apple Inc. QuickTime[®] and the QuickTime logo are registered trademarks of Apple Inc.

SM2DGraphView Copyright 2002-2008 Snowmint Creative Solutions LLC. Snowmintcs.com QuickTime[®] and the QuickTime logo are registered trademarks of Apple, Inc.

Brio Intelligence and Hyperion Intelligence are trademarks or registered trademarks of Hyperion Solutions Corporation.

Crystal Reports[®] is a registered trademark of Crystal Decisions, Inc. in the United States or other countries.

MasterCard[®] is a registered trademark of MasterCard International Inc.

Microsoft, Access, Excel, Internet Explorer, Office, Smart Tags, Windows and Word are registered trademarks or trademarks of Microsoft Corporation in the United States or other countries.

Quicken[®] and QuickBooks[®] are registered trademarks of Intuit Inc.

VISA[®] is a registered trademark of Visa International Service Association.

Other products mentioned may be service marks, trademarks or registered trademarks of their respective owners.

MYOB Licence Agreement

IMPORTANT—READ THIS CAREFULLY BEFORE USE. This is the Software Licence Agreement (Agreement). As you have purchased the Product (consisting of the User Documentation and the installation CD or other media containing the Software), following notification of the Licence you are now legally bound by its conditions. HOWEVER, if the Licence Agreement contains anything of which you were not aware prior to purchasing the Product or do not agree to be bound by, DO NOT INSTALL THE SOFTWARE but return the Product to the reseller in its entirety and a full refund of the purchase price will be made. By installing the Software and keeping the Product you are confirming that you have purchased the Product subject to this Licence and are bound by its provisions.

TRIAL VERSION SOFTWARE LIMITATION. If you use this Software on a trial basis prior to purchase, then additional restrictions govern its use. The Trial Version is intended to be used only for evaluation purposes and whilst you may create your own company data files (“Company Files”) you will have access to your Company Files only for a period of 90 days from the date of creation of each Company File. Thereafter, you will be able to access the Company Files created by you only upon your purchase of the full version of the Software product licence. Upon your purchase of the full version of the Software product licence, the restrictions in this paragraph (Trial Version Software Limitation) shall no longer apply, but you acknowledge that your use of the full version of the Software product licence will be conditional on your agreeing to the terms of the Software Licence Agreement accompanying the full version of the Software product licence.

1 Scope of Licence

MYOB Technology Pty Ltd (the Publisher), through its local publishers and distribution agents, hereby grants to you, the original purchaser, a paid-up, personal, non-exclusive and non-transferable Licence to use the Software and the User Documentation only in the region, territory or country specified on the packaging, or in Australia, subject to the terms and conditions of this Agreement.

- a **Activation of Company Files** You must register the Product and activate the company files you create or upgrade with the Software. You are entitled to activate up to five (5) new or upgraded company files. If required, you can obtain additional activations by contacting MYOB Australia Pty Ltd.
 - i) **New Company Files** You may only access each new company file you create for 90 days without activating it. After 90 days each new company file will become read-only until you activate it.
 - ii) **Upgraded Company Files** You may only access each company file you upgrade from Premier v7.5 (or earlier), Accounting v1 3.5 (or earlier), Accounting Plus v13.5 (or earlier) or AccountEdge v3 (or earlier) for 30 days without activating the company file. After 30 days each upgraded company file will become read-only until you activate it. Note that for upgrading from Premier v8 (or later), Accounting v14 (or later), Accounting Plus v14 (or later) and AccountEdge v4 (or later), your company file needs to be confirmed, as usual.
- b **Number of Users** If you have purchased:
 - i) a **Single User Software** Licence then you may use the Software on only one computer that you own or operate at a single physical location in respect of company files you have activated. You may transfer the Software from one such computer to another that you own or operate provided that you do not use or permit the usage of the Software on more than one computer or computer terminal at a time. In the event of an upgrade or Product exchange the Licence hereby granted shall automatically transfer to the new version or Products.
 - ii) a **Multi-User Software** Licence then you may use the Software on only one computer network that you own or operate at a single physical location and only then in respect of company files created and activated by you or by another licensed user. You may transfer the Software from one computer to another that you own or operate on this network provided that you do not use or permit the usage of the Software on more than the licensed number of computers or computer terminals at a time, nor permit the usage of the Software on more than one network at any one time, nor permit the Software to be used in respect of company files that have not been activated or created by you, or by another licensed user.

- c **Updates and Upgrades** In the event of an upgrade, update or product exchange, the Licence hereby granted shall automatically be transferred to the new version or product. All rights in respect of the original Product shall lapse and no further use of these shall be permitted.
- d **Portable or Home Computer and Archive Copies** You may make a copy of the Software and install it on either a portable computer or a computer located in your home provided that the copy is for your own exclusive use and is not operated simultaneously with the original of the Software. Otherwise you may not copy or duplicate the Software, except as necessary solely for archival purposes, Software error verification, or to replace defective storage media, provided you keep the original and the copies. You may not alter, decompile or disassemble the Software. You may make copies of the User Documentation up to but not exceeding the number of multi-user Licences you have purchased.
- e **Transfers** You may not sub-license, lease, rent or lend the Software or the User Documentation or otherwise transfer any of your rights under this Agreement. Subject to the prior written consent of the Publisher and the agreement of the transferee to be bound by the terms of this Agreement, you may permanently transfer the Software (together with any backup copies you have made) and the User Documentation. However, you may not retain any copies of either the Software or the User Documentation.
- f **Term** The Licence granted in this Agreement is effective until terminated. You may terminate it at any time by destroying the Software and User Documentation, together with all copies, or by returning them to the Publisher. If you fail to comply with any term or condition of this Agreement, this Licence will terminate and, upon any such termination, you agree to destroy the Software and User Documentation, together with all copies, or to return them to the Publisher. Termination of this Licence shall be in addition to and not in lieu of any other remedies available to the Publisher.
- g **Protection and Security** You agree to use your best endeavours and to take all reasonable steps to safeguard the Software to ensure that no unauthorised person has access to the Product and that there is no unauthorised copying or distribution of the Software or User Documentation.

2 Limited Warranty & Disclaimer

The Publisher warrants that the media on which the Software is recorded and the User Documentation provided with it are free from defects in materials and workmanship under normal use for a period of 90 days from the date of your original purchase. Except for the limited warranty described above, the Software is sold 'as is', and you are assuming the entire risk as to its quality and performance. It is your responsibility to verify the results obtained from the use of the Software.

If during the 90-day limited warranty period, you discover physical defects in the media on which the Software was recorded or in the User Documentation, the Publisher will replace them at no charge to you, provided you return the item to be replaced with proof of purchase to the Publisher. THIS IS YOUR SOLE REMEDY. IN NO EVENT WILL THE PUBLISHER BE LIABLE TO ANY PERSON FOR ANY DIRECT, INDIRECT, SPECIAL, INCIDENTAL, CONSEQUENTIAL OR SIMILAR DAMAGES, EVEN IF THE PUBLISHER HAS BEEN ADVISED OF THE POSSIBILITY OF SUCH DAMAGES.

Some jurisdictions do not allow the exclusion or limitation of implied warranties or of liability for incidental or consequential damages, so the above limitations or exclusions may not apply to you. This warranty gives you specific legal rights and you may also have other rights that vary from state to state. In the event that any of the above limitations or exclusions are held to be unenforceable, the Publisher's total liability shall not exceed the amount of the Licence fee you paid.

3 Entire Agreement

This Licence constitutes the entire agreement between the Publisher and the Licensee and any prior representations, statement or undertaking howsoever made are expressly cancelled. No amendment or modification to this Licence shall be valid unless it shall be in writing and signed by an authorised representative of the Publisher.

Contents

1 About networking	7
Network advantages	7
About this guide.....	8
What is a network?.....	8
LAN technologies	10
Network hardware	14
2 Setting up your AccountEdge network	19
Set up network hardware	20
Optimise your network.....	21
Prepare your network for AccountEdge Network Edition	23
3 Company file access	27
Enable the network connection	27
Opening a company file.....	29
4 Maintenance and troubleshooting	33
Maintaining your company file over the network	33
Troubleshooting FileConnect.....	37

1 About networking

MYOB AccountEdge Network Edition is designed specifically to enable multi-user access across a network.

This chapter includes the following topics.

Topic	See
Network advantages	below
About this guide	page 8
What is a network?	page 8
LAN technologies	page 10
Network hardware	page 14

Network advantages

Multi-user data entry

MYOB AccountEdge Network Edition enables multiple users to work on your company file simultaneously, from different workstations. This is ideal for businesses that have a large volume of daily transactions.

When you purchase MYOB AccountEdge Network Edition you receive three network licences at the time of purchase. However, you can buy additional licences whenever the need arises.

The number of users that can access a company file at one time depends on the number of workstation licences you have.

Faster data transfer

FileConnect is a system preference that's automatically installed when you install AccountEdge Network Edition. FileConnect's main purpose is to permit and streamline the transfer of data between workstations and your company file on the host computer.

Company file maintenance is centralised

You need to backup, verify and optimise your company file regularly. You can perform all of these tasks from either the host computer or a workstation.

For further information regarding maintenance of your file see '[Maintaining your company file over the network](#)' on page 33.

About this guide

This guide is intended to:

- provide basic conceptual information about networks and network hardware.
- describe how to set up your network for use with MYOB AccountEdge Network Edition.

Note that this information is not a comprehensive review of Mac networking and does not describe all types of network setups. It is intended to familiarise you with the concepts and technology required to set up and run AccountEdge Network Edition.

Expert assistance

For assistance in setting up and working with AccountEdge Network Edition, contact an MYOB Partner or Certified Consultant.

If you need help with your hardware, you can contact an Apple Authorised Service Provider, who specialise in Mac networking. While not necessarily MYOB experts, they can help you get the most out of your Mac OS X network.

To locate an MYOB Certified Consultant or Partner in your area, visit myob.com.au and choose the **Partners** menu.

What is a network?

A network consists of multiple connected computers that communicate through a wired or wireless medium to share data or other resources. It is made up of a few physical elements in addition to the computers, printers and other devices that are the main components of the network.

Simple networks often include such items as network interface cards, network cables and hubs. More sophisticated networks also use items such as bridges, switches and routers to connect the devices in the network in more elaborate ways.

The introduction of wireless network technology, such as the AirPort Extreme Base Station (a type of router or hub), has also added to the range of network devices available.

After the physical connections of a network are made, special networking software is enabled on the networked computers so the computers can communicate with each other. In ['Prepare your network for AccountEdge Network Edition' on page 23](#), we explain how to configure this software so it meets your needs.

Why use AccountEdge Network Edition?

Networking allows multiple computer users to access the same files and programs simultaneously. You can add, change or delete information, print reports and perform analysis functions at the same time as your colleagues.

Local-area networks (LANs)

A local-area network, or LAN, is a specific type of computer network which is typically tailored for computer communication over a short distance. There are two types of LANs which can be set up: peer-to-peer and client/server.

Peer-to-peer networks

In a peer-to-peer network all the computers on the network are linked using a hub or router as a central connecting device. This enables the hard disks and other devices of each computer to be shared equally by the network's other computers. And so each computer is considered a 'peer' of the other computers on the network.

A peer-to-peer network is inexpensive and relatively simple to set up. It is best-suited for businesses that have six or fewer computers and devices to connect to the network, with a moderate data load. If you have large volumes of data to transfer, a client/server configuration might be more suitable.

AccountEdge Network Edition is designed to work on a peer-to-peer network.

Client/server networks

Businesses that have seven or more computers and devices in their network, and who have heavy data loads, may want to consider creating a client/server network. Client/server networks use a dedicated central computer on the network (a server) to store files for the other computers (clients) to use. The server is usually a high-performance computer.

By incorporating a server, a business can store large amounts of files—including programs and data—and expect that all computers accessing those files will be able to use them at about the same speed. Because client/server networks require an additional computer, they are more expensive and are more complex to set up.

MYOB AccountEdge Network Edition is recommended for use on a peer-to-peer network

On a peer-to-peer network running AccountEdge Network Edition, the *company file* (the file which contains your business's financial data) is stored on one of the computers in the network. This computer is referred to as the *host computer*, and it must be accessible by the other computers on the network, known as *workstations*.

The host computer does not need to be a dedicated computer (like a server), it can be any computer in the network. Note that all computers that will use AccountEdge Network Edition must be using Mac OS X 10.4 or higher.

In '[Prepare your network for AccountEdge Network Edition](#)' on page 23, we discuss how to set up a peer-to-peer network.

LAN technologies

Each type of LAN uses a specific *LAN technology* to help the devices on the network communicate with each other.

Wired LANs Ethernet is the most common wired LAN technology. Standard **Ethernet** networks run at a data rate of 10 million bits per second (10Mbps), **Fast Ethernet** transports data at 100 Mbps and **Gigabit Ethernet**, at 1,000 Mbps. Most new Macs are equipped with either Fast or Gigabit Ethernet.

Wireless LANs Several wireless LAN technology options are also available. In wireless LANs, data is transferred using radio waves instead of the traditional wires and cables of wired networks.

Wireless computers can also access the Internet. Wireless technology (known simply as "Wi-Fi") allows computer users to be more flexible in their workplace with the same security and reliability of a wired network.

A common wireless technology for Macintosh computers is Apple's **AirPort**. An AirPort-enabled Macintosh can communicate to similarly equipped Macs without additional hardware.

You can use an AirPort Extreme Base Station to create or join any type of Ethernet network, which would allow AirPort-equipped computers to communicate with computers not using AirPort, as well as with the Internet. To learn more about Apple wireless technologies, visit apple.com/wifi.

MYOB AccountEdge Network Edition and LAN technology

If you want to use a wired network, we recommend using Fast or Gigabit Ethernet for your LAN technology.

If you want to use a wireless network, we suggest that you build an AirPort network with AirPort Extreme Cards and an AirPort Extreme Base Station.

Network protocols

Network protocols are a convention or standard that controls and enables connection, communication, and data transfer across a network.

These protocols must be set up in your operating system to ensure that programs you run on the network—including MYOB AccountEdge Network Edition—are able to send and receive data with the other computers on the network.

Network protocols are set up by default on most newer computers, so you are unlikely to need to install a protocol separately. However, if are setting up a network for the first time, you may need to activate the protocols on your computers.

TCP/IP (Transmission Control Protocol/Internet Protocol)

TCP/IP is the single, global standard for network protocols on local area networks because it can handle large amounts of data with ease. It also works well in mixed environments with many different types of computers, including Macs and Windows PCs.

TCP/IP has a direct method of transferring data from one computer or device to another. Each computer in a TCP/IP network is assigned a specific, unique address (known as an *IP address*) that identifies the computer to the network and across the Internet.

All IP addresses are stored in a centralised registry or a distributed directory service, often located within a company using a router, or outside of the company at an Internet Service Provider (ISP).

When one device needs to communicate with another device in a TCP/IP network, it sends a small sliver of data, known as a *packet*, to the centralised registry. The registry then locates the intended device's IP address and directs the packet immediately to that device.

For example, if Computer1 is trying to send data to a company file on Computer2, Computer1 will send its request to the registry. The registry will then pass on Computer1's request directly to Computer2.

How Bonjour simplifies networking with TCP/IP Bonjour, previously known as Rendezvous, is a technology that connects computers automatically, without any IP address configuration on the part of the user. Whenever a computer is added to an existing TCP/IP network, Bonjour senses the network's settings and instantly prepares the computer for use with that network by giving it an IP address and special Bonjour name. All computers using Bonjour can communicate with each other simply by browsing for their Bonjour names in the Finder's **Connect To Server** window.

Bonjour isn't a requirement for using AccountEdge Network Edition; you can choose to configure direct IP settings between your computers and your network.

MYOB AccountEdge Network Edition requires TCP/IP network protocols

TCP/IP is the network protocol that's required for AccountEdge Network Edition. We also suggest that you consider using Bonjour to simplify the process of accessing your company file on the network.

Network security methods

Firewalls

The most common software-based method of protecting your data is a firewall. Firewalls prevent unauthorised connections and data transmissions between computers on a network, and can be configured to deny network access to external computers.

A firewall filters all information traveling across a network (or coming from other networks) to determine whether to forward the information toward its intended destination.

There are two common types of firewalls:

- An **Internet firewall** is used to protect the computers on a network from external attacks. This type of firewall is usually installed when you add a router to your network so you can connect to the Internet. See '[Routers](#)' on page 15.
- A **personal firewall** is used when you need to protect a computer from another computer on the same network. For example, if the other computer on the network is regularly infected by viruses. A personal firewall is available as a built-in part of Mac OS X, or you can install personal firewall software from a third-party provider.

Ports

An extension of the TCP/IP protocol, a *port* is an entry point, guarded by a firewall, through which data of only a specific type flows. Firewalls are usually configured to monitor your computer's data ports. Each computer that uses TCP/IP is able to communicate through up to 65,535 ports.

Software programs either use preassigned or dynamically assigned port numbers.

Preassigned port numbers Programs that use ports with preassigned numbers communicate with the most common types of data in the computing world. For example, web browser software always communicates HTTP data (that is, web pages) through port 80 on a computer, and email programs always transmit SMTP data (that is, email messages) through port 25.

Dynamically assigned port numbers Programs using this method receive their assigned port each time a connection must be made, and the port is usually different each time. For example, an online multimedia program may use port 50444 to receive streaming audio during one session and then use port 56733 the next session. All dynamically assigned ports are numbered between 49152 and 65535.

Using a firewall to restrict the use of ports By restricting the use of specific ports in your firewall software, you can effectively prevent particular types of data from entering your computer. For example, if you configure your firewall to deny the use of port 25, your computer will not be able to receive email.

You can also use your firewall to restrict the use of a range of ports (for example, 50000 to 57000). By doing so, you'll restrict data of any type from passing through those ports.

Securing your network for MYOB AccountEdge Network Edition

You do not need to make changes to your Internet firewall to use MYOB AccountEdge Network Edition. If you use a personal firewall on your host computer, however, you will need to ensure that the firewall is configured to allow data to pass from workstations to the host.

MYOB AccountEdge Network Edition does not use a preassigned port number for the transmission of data from workstations to your company file on the host computer. Therefore, any port between 49152 and 65535 can be used to transmit data to your company file.

You can choose to specify a particular port number in that range for your data activity (but the port must not be closed by a personal firewall), or you can simply allow AccountEdge Network Edition's FileConnect system preference to dynamically assign a port for you.

Later in this guide, we'll show you how to configure FileConnect and decide whether you should assign a specific port for the transmission of your data.

Network hardware

If you are setting up a network for the first time, you need to consider your business's immediate and future communications requirements. This means choosing hardware and software components that can be easily expanded as your business grows.

You can buy off-the-shelf products geared for the Macintosh market, which include the minimum hardware and software needed to set up a network.

However, you can customise your network by purchasing and integrating additional network components. The topics below briefly describe network components.

Network interface equipment

Network interface equipment works with your network software to send and receive messages on the network. On wired networks, the network interface equipment is usually an Ethernet port, while wireless networks use an AirPort Card to communicate with the network. Each computer that you want to connect to the network must have some sort of network interface equipment installed in it.

Installing network interface equipment

If you choose a wired Ethernet network, you won't need to install anything; an Ethernet port is included in all Macintosh computers.

If you are using an AirPort wireless network, each computer in the network needs an AirPort Card installed. Note that most newer computers come pre-equipped with this.

Network cables

If you're planning on using a wireless AirPort network, you can skip this section and go to ['Routers' below](#). There are two types of network cable: Twisted pair cabling and coaxial cabling.

Twisted pair cabling This type of cabling has a number of benefits over coaxial cable. Although it resembles ordinary telephone cable, twisted pair cabling has more stringent specifications regarding its susceptibility to outside electromagnetic interference than common telephone wire. Twisted pair cabling comes in two forms: unshielded twisted pair (UTP) and shielded twisted pair (STP). Shielded twisted pair has more defense against electromagnetic interference than unshielded twisted pair.

Coaxial cabling This is an older type of cable used for networking personal computers. It is no longer a recommended choice for Mac networks. We recommend using twisted pair shielded cable for all network-capable MYOB products.

Routers

To allow the computers on your new network to access the Internet, you'll need to use a **router**. A router acts as an intermediary between your local network of computers and the Internet. Usually, the router is **firewalled**, which means it protects the computers on your network from external attack. The individual computers on the network are then connected to the router with cables or wirelessly. When a computer wants to retrieve information from the Internet, it notifies the router.

The router then passes the request to a modem, and the modem gathers the requested data (such as a web page) and returns it to the router. Finally, the router directs the data to the computer. Typically, this transfer of messages and data takes only a few seconds.

Routers exist in both wired and wireless networks.

Network hubs

A *network hub* is the central connection point across a LAN. All computers and other devices (for example, printers) in a wired network are linked to each other through the hub. In a hybrid network, a wireless computer can also connect to the rest of the network through the hub.

A typical Ethernet hub, sometimes known as a repeater, has a number of ports (holes in which cables are inserted) to which computers and other devices are attached. One twisted pair cable can be inserted into each port. The other end of each cable is inserted into the Ethernet port of each computer or device.

When a computer transmits information to the network, the information travels through the computer's Ethernet port to the hub. The hub then makes a copy of this information and sends it to each computer on the network. For example, if one user in the network enters a transaction in a hosted copy of AccountEdge Network Edition, the hub communicates the change to other computers in the network.

In networks that access the Internet through a central source, the network hub might also be connected to a router.

Hubs are usually the central point of LANs, so they're usually placed in a central location in the office.

Types of hubs

There are a number of varieties of hubs that allow you to control the manner in which your network operates. Following is a brief description of a few types of hubs.

Standalone hubs are simple connector boxes with a number of ports, typically fewer than 12. Many standalone hubs also can be connected to other standalone hubs—either by connecting them with coaxial cable or linking them using twisted pair cable between ports on each hub (called *cascading*). As your business grows, you can connect new hubs, or connect two separate LANs. This type of hub is relatively inexpensive and is best suited for small, independent workgroups typically with fewer than 12 users per LAN. A standalone hub will probably serve the needs of most small businesses.

Stackable hubs look and act like standalone hubs except that several of them can be stacked or connected together, usually by short lengths of cable. The advantage of using stackable hubs is that, when connected, the hubs can be managed as a single unit by a network administrator. As your network grows, you can add more stackable hubs to accommodate more users on the network.

Stackable hubs are ideal if you don't want to make a large initial investment in the network but you are certain that the network will expand in the future.

Modular hubs are larger units that can accommodate many network users. A modular hub is made up of a chassis that can contain anywhere from four to 14 slots. Each slot in the chassis can hold a communications card, which works like a standalone hub. Each communications card (also known as a *module*) can support around 14 computers and other devices.

When several communications cards are placed in the chassis, the computers connected to the cards are able to communicate with each other in the same manner as they would if they were part of the same card. Modular hubs can be managed by a network administrator.

What kind of hub works best for an AccountEdge network?

The kind of hub you choose depends upon your current needs, and how much you expect your network will grow in the future. There are no special requirements for choosing a hub for using AccountEdge Network Edition.

If you have fewer than five computers at your company and you don't expect that to change much in the next few years, you might consider an inexpensive and simple standalone hub.

If you already have six or more computers and you anticipate needing more, you might want to investigate stackable or even modular hubs for your business.

2 Setting up your AccountEdge network

If you haven't already set up the physical components of your network, this chapter will help you with the basic setup. We recommend that you employ a networking consultant or MYOB Certified Consultant to set up your network hardware so that it fully meets your business' needs. To locate an MYOB Certified Consultant in your area, visit myob.com.au and choose the **Partners** menu.

Minimum system requirements

Your system must meet the minimum system requirements in order to run MYOB AccountEdge Network Edition.

Operating system	Mac OS X 10.4 or 10.5
Hardware	PowerMac or Intel G5 or later with at least 1 GB RAM
Network	<i>Wired Ethernet network:</i> Fast Ethernet (100 Base T or faster twisted pair cable, shielded) <i>AirPort wireless network:</i> AirPort Extreme cards installed in all computers AirPort Extreme Base Station TCP/IP must be enabled on all computers

Do these tasks to set up your network

Task	See
1 Set up your network hardware	page 20
2 Optimise your network	page 21
3 Prepare your network for AccountEdge Network Edition	page 23

Set up network hardware

The instructions for building your network assume that your network will be connected to the Internet and will require a router. If your network won't be used to access the Internet, you can skip the section about installing a router. You should carefully review the documentation for the network equipment you purchase, and adhere to the manufacturer's recommendations for its use.

Setting up a wired Ethernet network

The following procedure outlines the basic steps for setting up the physical elements of a typical peer-to-peer Ethernet network.

- 1 Decide where you want to install the hub and/or router.
Pick a location that's relatively close to all the computers that will be on the network. You may find it convenient to situate your router near other central devices, such as the modem or printer. Refer to manufacturer's documentation regarding recommended distances between workstations and hub/router.
- 2 If you plan to connect two or more hubs together, do this now.
Ensure you use the dedicated ports on the hubs. Some hubs use special 'uplink' ports for connecting to other hubs.
- 3 Switch off all the computers and other devices that you plan to add to the network.
- 4 Connect one end of a network cable into one of the hub or router's ports, then connect the other end of the cable into one of your computers.
Repeat this step for each computer and device you want on your network.
- 5 Plug your hubs or router into an electrical outlet and turn on your computers.
- 6 Follow the instructions in your new hardware's documentation to configure it for your Ethernet network.

Once you finish these steps, your network hardware is ready to go. Before you continue the setup process, see ['Optimise your network' on page 21](#).

Setting up a wireless AirPort network

The following procedure outlines the basic steps for setting up a typical AirPort network that's connected to the Internet.

- 1 Decide where you want to install the AirPort base station.
Pick a location that's relatively close to all the computers that will be on the network. You may find it convenient to situate your base station near other central devices, such as the modem or printer. Refer to your base station documentation for recommended distances between workstations and base station.
- 2 If you plan to connect two or more AirPort base stations to increase the range of your network, do this now.
Refer to your base station documentation to learn how to 'bridge' base stations to increase your network's range.
- 3 If your computers aren't already equipped with AirPort Cards, install them now.
- 4 Switch off all the computers and other devices that you plan to add to the network.
- 5 Connect your AirPort base station into your Internet source and plug it into an electrical outlet.
- 6 Turn on your computers and use the AirPort Setup Assistant to configure each computer for your AirPort network.

Once you finish these steps, your AirPort network is ready to go. Before you continue the setup process, see '[Optimise your network](#)' below.

Optimise your network

Optimising your network helps ensure the network is running as efficiently as possible before you begin using AccountEdge Network Edition.

System performance

- Ensure your computers all meet (or exceed) the minimum system requirements for AccountEdge Network Edition. The requirements are printed on your AccountEdge Network Edition box and are listed in the *Getting Started* guide provided with your software.
- Ensure all computers are using the same version of Mac OS X. This will minimise communication time between computers.

- Try to keep some hard disk free on each computer. When a hard disk has very little free space, files—including your AccountEdge Network Edition company file—can become fragmented on the disk.

Computer memory

- Although AccountEdge Network Edition can run on computers with less than 1GB of RAM, you'll find that increased amounts of memory will improve your system's performance. If possible, upgrade your computers to exceed the minimum RAM required.
- If you're planning on running additional programs while AccountEdge Network Edition is running, we recommend that you purchase additional RAM.

Network maintenance

- The faster your network, the faster AccountEdge Network Edition will send and receive messages across the network. If you are using Fast Ethernet at 100 MBps, we recommend you upgrade to Gigabit Ethernet running at 1,000 MBps.
- If you use a wired network, we recommend you use high-quality shielded twisted pair cable.
- Keep your network components as clean and dust-free as possible.
- Try to minimise the traffic on your network when AccountEdge Network Edition is in use. AccountEdge Network Edition requires a significant amount of attention from the network when it's recording and processing your company's financial data. If other programs are requesting network resources at the same time, you may experience slower performance in AccountEdge Network Edition.

Proceed with '[Prepare your network for AccountEdge Network Edition](#)' on page 23.

Prepare your network for AccountEdge Network Edition

This section describes how to select, set up and identify your host computer, and outlines how to configure the network protocol.

NOTE: Administration access required If you are unable to complete the procedures in this section because you do not have sufficient access, contact the person who set up your network.

You need to set up your network so it properly supports MYOB AccountEdge Network Edition. Read the following sections.

- [‘Choosing a host computer’ below](#)
- [‘Identifying the host computer’ on page 24.](#)

Choosing a host computer

For networking, the company file needs to be stored on a host computer to which each user has access. In choosing a suitable host computer, consider the following:

- **Host the company file on the most powerful computer in the network** Network performance is enhanced if the company file is stored on the fastest computer with the most memory.
- **Host the company file on a network server** If your company employs a server running special server software such as Mac OS X Server, consider hosting the company file on the server. Servers are faster and are specially designed to handle network traffic.
- **Host the company file on the key employee’s computer** If one employee will use AccountEdge Network Edition more than anyone else, consider storing the company file on that employee’s computer. Better performance can result from accessing the company file directly, compared with accessing it across the network.
- **Host the company file on a backup computer** If you store all your important files on a central host that is backed up frequently, store your company file on that host. Then the company file will be backed up with all your other vital data.

Constraints on host computers

You can run AccountEdge Network Edition on a host computer and use the company file on that computer, but users on workstations accessing the same file may discover that their system is slower than usual if AccountEdge Network Edition is running on the host. If you encounter this situation, here are some solutions:

- Upgrade all your computers to a recent release of Mac OS X, and be sure they're all using the same version. This will take advantage of the latest networking features of Mac OS X and streamline the communication among computers.
- Try to perform processing-intensive tasks—such as printing documents or installing software programs—on the host computer only when others do not need access.

Identifying the host computer

Workstations accessing the company file need to be able to identify the host computer on the network.

The host can be identified easily by name through Bonjour, or manually, through the host IP address. You can also use a combination of the two methods. (Note that Bonjour was called Rendezvous in earlier versions of Mac OS X.)

Using Bonjour

In a network that uses Bonjour, any workstations running AccountEdge Network Edition can use Bonjour to locate the company file by knowing the host computer's name. Users can open and work with the company file without needing to know any other details about the host computer.

To find the name of a computer Open the **System Preferences** on the computer you want to identify and click **Sharing**. The computer's name is displayed near the top of the window.

CAUTION: Bonjour cannot be used in some network situations If you have a network that incorporates multiple subnetworks (subnets) and the host computer is on a different subnet than your workstations, you won't be able to use Bonjour.

Using IP addresses

Permanent IP addresses may be assigned to computers in some network configurations. This means the IP address can be reliably used to identify the host, without losing connection because of a dynamically changing IP address.

If the computers on your network use different versions of Mac OS X (for example, Mac OS 10.4.1 and 10.5), you might find that your network service will be more reliable and efficient if you choose the IP address method to identify each computer. See '[Configuring TCP/IP for Built-in Ethernet](#)' below, to learn about setting up IP addresses.

You can use a combination of both methods Depending on the flexibility of your network setup and management, you may decide to give users the choice of how to identify the host: through Bonjour and through the IP address.

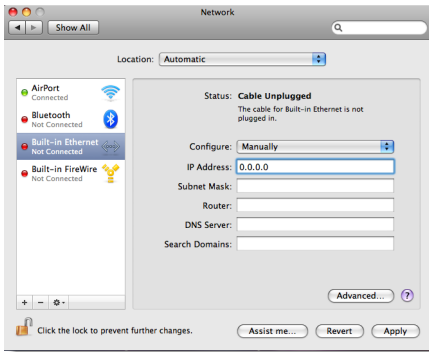
Configuring TCP/IP for Built-in Ethernet

Note that the following procedure may not apply to your LAN set up. You may need to seek the advice of your system administrator or a qualified network consultant.

If you are using AirPort, see your AirPort user documentation for how to configure TCP/IP.

- 1 Log in as a user with administrator rights.
- 2 Go to the Apple menu and choose **System Preferences**.
- 3 Click the **Network** icon. The **Network** system preferences appears.
- 4 Select **Built-in Ethernet** from the list on the left. Options appear in the right-hand side of the window.
- 5 If you want to allow the computer to be dynamically assigned an IP address, select **DHCP** from the **Configure** drop-down list.

- 6 If your network setup requires you to manually enter the IP details:
 - a Select **Manually** from the **Configure** drop-down list. Fields for entering the IP details appear.



- b Enter the IP address details, including the LAN's primary DNS server on the first line in the **DNS Servers** text box.
 - c If there are any secondary DNS servers, add them on the remaining lines.
- 7 Click **Apply**.

If you selected DHCP, the server then dynamically assigns an IP number to the computer, and the **IP Address**, **Subnet Mask**, and **Router** fields will be updated. Make note of the IP address, as you will need to know it when you setup your company's workstations to connect to the host computer.

3 Company file access

This section describes how to enable your workstations to access and open your company files across the network.

Before you can complete these procedures, you need to have:

- installed your software and created a company file. See the *Getting Started* guide.
- set up and enabled your network. See [‘Setting up your AccountEdge network’ on page 19](#).

Enable the network connection

In order for your workstations to connect to the host computer, you need to enable your network connection using FileConnect. FileConnect must always be running on the host computer while you are using AccountEdge Network Edition.

If you haven't already installed your software, you need to do so before using FileConnect. Refer to the installation instructions in the *Getting Started* guide.

When you install your software, FileConnect is automatically added to your system preferences.

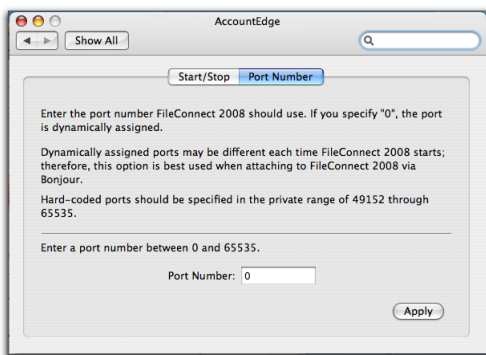
Start FileConnect on the host

FileConnect needs to be running on the host computer so that your workstations can access the company file. Do not install or run FileConnect on your workstations.

To start FileConnect

- 1 Launch the **System Preferences** from the dock. The **System Preferences** window appears.
- 2 In the Other section of the window, click the **AccountEdge Network Edition** icon. The AccountEdge system preferences appears.
- 3 Click **Start FileConnect** to turn FileConnect on. After a moment, the text on the button will change to **Stop FileConnect**, which indicates that FileConnect is now running.

- 4 Click the **Port Number** tab.



- 5 Decide if you want to use a specific port to allow AccountEdge Network Edition workstations to access the company file on the host computer, or if you want to allow FileConnect to choose a port for you.
 - If you want to allow FileConnect to assign a port, or if you will be using Bonjour to access your company files, leave the **Port Number** field at zero. This indicates the port used to transmit AccountEdge Network Edition data will be dynamically assigned by FileConnect; that is, a different port number may be used each time FileConnect is restarted.
 - If you will be using a direct IP address to access your company files, or if you want to assign a specific port, enter a port number between 49152 and 65535 in the **Port Number** field. This will ensure your workstations will access the company file using this particular port on the host computer.

For more information about ports, see '[Network security methods](#)' on [page 12](#).

Prevent the host computer from sleeping

When other users are accessing the company file on the host computer, you should not allow the host computer to go into sleep mode. Follow the steps below to prevent a computer from going to sleep.

To prevent the host computer from sleeping

- 1 Log in to the host computer as an administrator.
- 2 Go to the apple menu and choose **System Preferences**. The **System Preferences** window appears.

- 3 Click **Energy Saver** and then click **Sleep**.
 - 4 Click **Show Details** to see the sleep settings.
 - 5 Drag the top slider to **Never**.
 - 6 Deselect the **Put the display to sleep when computer is inactive** option.
 - 7 Close the window.
-

Opening a company file

When you create or upgrade a company file, it is stored on the host computer at **Macintosh HD\Library\Application Support\AccountEdge NE\Databases**.

Provided that the company file is stored at this location, you will be able to open it from any of your workstations that have AccountEdge Network Edition installed. You can open a company file, on either the host computer or on workstations, using the **Finder** or by using a connection document.

To open a company file using the Finder

- 1 In the **Finder**, locate the MYOB AccountEdge Network Edition installation folder.
This is the folder that was created when you installed AccountEdge Network Edition. For example, if you installed your software in the default location, the folder location will be **Applications\MYOB AccountEdge NE v8.5**.
- 2 Double-click the AccountEdge Network Edition NE icon. The **Welcome** window appears.
- 3 Click **Open your company file**. The **Company File Browser** window appears.
- 4 Select the method you use to locate the host computer on the network, either **Bonjour** or **IP Address**.
- 5 If you want to locate the company file using Bonjour:
 - a Click **Bonjour**. The name of the host should appear in the **Hosts** list.
 - b Click the host's name to select it. The company files residing on the host computer will be displayed in the **Company Files** list.
 - c Select the company file you want to open.

- 6 If you want to locate the company file using the IP address:
 - a Click **IP Address**. The IP address options appear.
 - b Enter the IP address and port number of the host computer in the **IP Address** and **Port #** fields, then click **List Files**. The company files saved to the host computer appear in the list.
 - c Select the company file you want to open.
- 7 Click **Open**. The **Sign-on** window appears.
- 8 Complete the **Sign-on** window and click **OK**. The company file opens.

To create a connection document for a company file

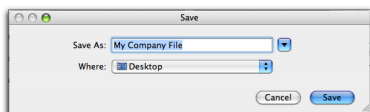
You can simplify the process of opening a company file on the host computer by creating a connection document on a workstation. A *connection document* is a shortcut file that retains the information about your company file's location on the host computer. You can place the connection document in a convenient location on your workstation, such as the desktop. You can then double-click it to start AccountEdge Network Edition and open your company file.

Connection documents replace aliases A connection document is similar to an alias, which is another type of Mac shortcut file. However, you cannot use an alias to open a company file on a host computer. If you wish to use a shortcut, you must use a connection document.

- 1 In the **Finder**, locate the MYOB AccountEdge Network Edition installation folder.

This is the folder that was created when you installed AccountEdge Network Edition. For example, if you installed your software in the default location, the folder location will be **Applications\MYOB AccountEdge NE v8.5**.
- 2 Double-click the AccountEdge Network Edition NE icon. The **Welcome** window appears.
- 3 Click **Open your company file**. The **Company File Browser** window appears.
- 4 Select the company file for which you want to create a connection document. Select the file in the **Bonjour** or **IP Address** tab of the window, depending on how you access the company file.
- 5 Click the **Save Connection** button at the bottom of the **Company File Browser** window. The **Save** window appears.
- 6 Enter a name for the connection document in the **Save As** field.

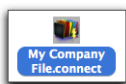
- 7 Choose where you want to store the connection document by making a selection from the **Where** list. We suggest that you save the document on your desktop, where you can later drag it to the Dock for easy access.



- 8 Click **Save**. The connection document will appear in the location you selected with the name you entered. Note that the name of the connection document will be displayed with a '.connect' suffix.

To open a company file using a connection document

- 1 Locate the connection document and double-click it. AccountEdge Network Edition starts and the **Sign-on** window for the company file appears.



- 2 Complete the **Sign-on** window and click **OK** to open the company file.

4 Maintenance and troubleshooting

This chapter describes how to maintain your company file on the network and how to stop and start FileConnect.

Maintaining your company file over the network

To help ensure the integrity of your financial information, you should perform regular maintenance on your company file, including backing up, verifying and optimising your company file.

Perform maintenance tasks on the host computer We recommend you perform maintenance tasks on the host computer. Performing these tasks on a workstation can take longer and network interruptions may disrupt the processes.

Enable single-user file locking for maintenance tasks Only one user should have access to a company file during file maintenance procedures. For example, optimising a company file rearranges its internal structure, so ensure that the file is not being accessed while this process is taking place.

Single-user file locking prevents all but the first logged-in user from accessing a shared company file—other users cannot log in.

TIP: View a list of users To check whether any other users are currently using the company file before you set a single-user lock, go to the **File** menu and choose **Active Workstations**.

To enable single-user access after starting your MYOB software, click **Single-user access** in the **Sign-on** window.

Task		See
1	Back up your company file	below
2	Verify your company file	page 35
3	Optimise your company file	page 36

Backing up company files

If multiple users access a company file, you need to back up the company file on the host computer—including custom forms, letters and spreadsheet templates you have created. You can then copy the updated templates to each workstation and ensure the latest versions are used.

To back up a company file

- 1 Open the company file you want to back up.
- 2 Make sure no other users are logged into the company file.
- 3 Go to the **File** menu and choose **Backup**. The **AccountEdge Network Edition Company File Backup** window opens.
- 4 Choose the type of backup you want:
 - To back up your company file and templates, click **Backup all data**.
 - To back up your company file only, click **Backup Company File only**.

NOTE: Customised documents stored on workstations will not be backed up If you're using the host computer to back up your files, any custom letters, forms and spreadsheets stored on the workstations on the network will not be included in the backup. You will need to back up these items separately on your workstations.

- 5 Choose whether to check your company file for errors by selecting one of the options.
- 6 Select a location option for your backup:
 - To back up to your local disk, to a different hard disk, or to other media, select **To a Disk**.
 - To back up to a MobileMe account, select **MobileMe**.
Note that before you can back up to MobileMe, you must have a MobileMe account through Apple, Inc. For more information about MobileMe accounts, see the Apple website.
- 7 Click **Continue**.

- If you selected the **Check Company File for errors** option, the verification process may take several minutes.

When the verification process finishes, click **OK** in the window that appears. Note that this window appears whether or not errors have been found in the company file.

The **Back Up** window appears.

- Specify where you want to store the backup file.

A default filename is assigned:

Default filename	Description
Backup <i>mm-dd-yyyy filename.sit</i>	<ul style="list-style-type: none"><i>mm-dd-yyyy</i> is the date from your computer's clock<i>filename</i> is your company file name<i>.sit</i> is the file extension and cannot be changed.

- If you want, you can change the name of the backup file. Note that you should name your backups with enough information to tell you when they were from and where you were up to in data entry—for example, 'Monday 010709' or 'Backup as of 010709'.
- Click **Save**. The backup process begins.
- If you are storing the backup files on a removable storage device, label them clearly, so you know exactly when the backup was done.

Verifying company files

Data verification is the process of checking a company file for errors. Verification can catch minor problems in the file before they cause serious problems. You can verify your company file at any time. We recommend you do this on the host computer.

To verify a company file

- Open the company file you want to verify.
- Make sure no other users are logged into the company file.
- Go to the **File** menu and choose **Verify Company File**. A message appears, describing the data verification process.
- Click **OK** to confirm that you want to verify your company file. Your company file is scanned for errors.

When the file verification process is complete, a message appears describing the results of the process.

If no errors were found, click **OK** to end the verification process.

If your company file is corrupt, you can:

- Attempt to fix the company file by optimising it—see ‘[Optimising company files](#)’ below—and then repeat from [step 1 above](#) to check if the errors have been fixed.
- Restore the company file from your most recent backup—see ‘[To restore a backup](#)’ in the Maintenance chapter of your user guide.

5 Click **OK**.

Optimising company files

As you enter transactions, then remove or purge them, your company file will have unused areas that once contained these transactions. These unused areas can affect the efficiency of your company file and take up space on your hard disk.

You can use the Optimisation Assistant to remove the unused areas in the company file and keep your software running efficiently.

You can optimise your AccountEdge Network Edition data file at any time. We recommend you do this on the host computer.

To optimise a company file

- 1 Open the company file you want to optimise.
- 2 Make sure no other users are logged into the company file.
- 3 Go to the **File** menu, choose **Optimise Company File**. An information window appears.
- 4 Click **OK** to continue. The **Optimisation Assistant** window appears.
- 5 Click **Continue**. The **Open an MYOB Data File** window appears.
- 6 Locate the company file and click **Open**. The optimisation process begins.

When the process is finished, a window will appear, confirming the company file has been optimised.

- 7 If you want to optimise another company file, click **Continue** and repeat from [step 6](#).
- 8 Click **Close**.

Troubleshooting FileConnect

The following information will help you prevent interruptions to your workstations' access to the host computer.

To restart FileConnect on the host computer

If FileConnect quits unexpectedly, you will need to restart it. When you restart the system preference, review the port settings to be sure they are accurate.

- 1 Log in to the host computer as an administrator.
- 2 Go to the apple menu and choose **System Preferences**. The **System Preferences** window appears.
- 3 Click the AccountEdge icon. A control panel window appears.
- 4 Click **Start FileConnect** to turn FileConnect on. After a moment, the text on the button will change to **Stop FileConnect**, which indicates that FileConnect is now running.
- 5 Check that your access ports are set correctly:
 - If you allow FileConnect to assign a port, or if you use Bonjour to access your company files, leave the **Port Number** field at zero. This indicates the port used to transmit AccountEdge Network Edition data will be dynamically assigned by FileConnect.
 - If you use a direct IP address to access your company files, or if you use a specific port number, enter the port number between 49152 and 65535 in the **Port Number** field. Your workstations will access the company file using this particular port on the host computer.

For more information about ports, see '[Network security methods](#)' on [page 12](#).

To stop FileConnect on the host computer

Once FileConnect is running on the host computer, you should not turn it off. If you do need to turn off FileConnect, follow the steps below. Note that users will not be able to access your AccountEdge Network Edition company file if FileConnect is not running.

NOTE: All workstations need to be logged out of company files

FileConnect will not stop unless all workstations are disconnected from your company files. To check whether any other users are currently using the company file, go to the **File** menu and choose **Active Workstations**.

- 1 Log in to the host computer as an administrator.
- 2 Go to the apple menu and choose **System Preferences**. The **System Preferences** window appears.
- 3 Click the AccountEdge icon. A control panel window appears.
- 4 Click **Stop FileConnect** to turn FileConnect off. After a moment, the text on the button will change to **Start FileConnect**, which indicates that FileConnect is no longer running.
- 5 If you receive an alert message when you try to stop FileConnect, a user may still be logged into a company file. Make sure all workstations are logged out of the company files and repeat this procedure.